

J62A - 12 - 104524 - KM REPLACEMENT PARTS LIST AND DIMENSIONAL DRAWINGS

Bulletin No. KMJ62A

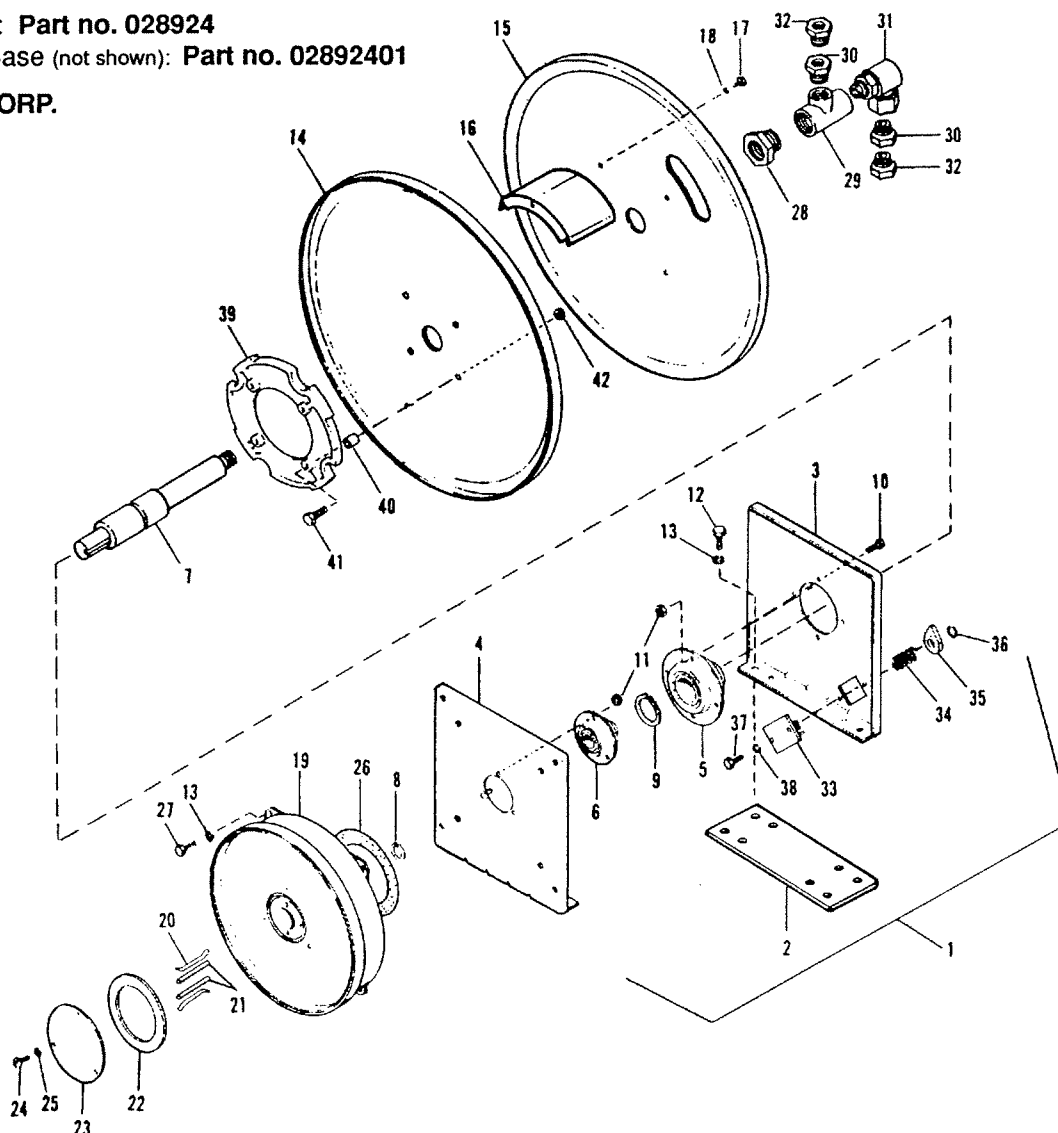
HOSE REELS

May 1990

Complete Assembly: Part no. 028924

Complete w/ Riser Base (not shown): Part no. 02892401

GLEASON REEL CORP.
MAYVILLE, USA



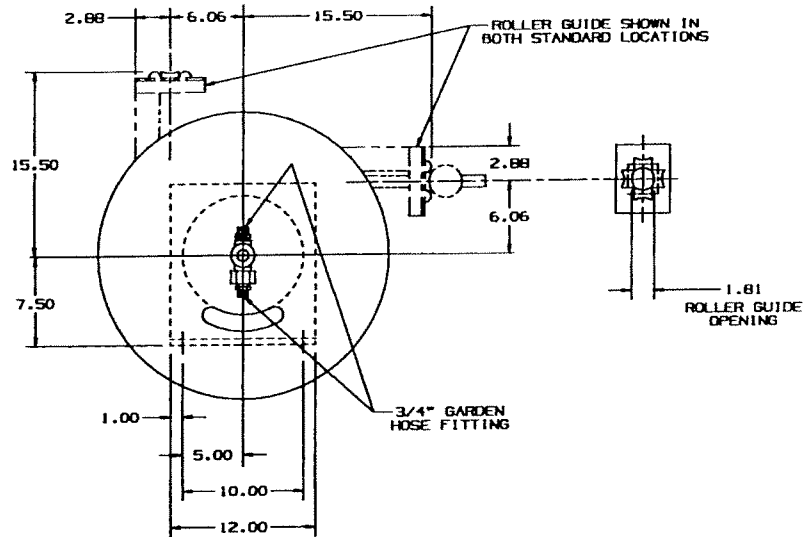
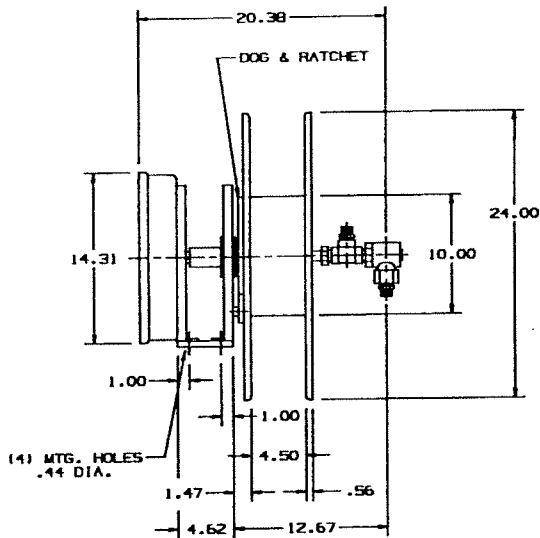
ITEM	PART NO.	DESCRIPTION	REQ'D
1	006093	Frame Assembly	1
2	G40-18	Base Plate	1
3	G62-50	Frame - Drum End	1
4	G08-61A	Frame - Spring End	1
5*	G36-55	Bearing - Flangette	1
6*	G36-56	Bearing - Flangette	1
7	006094	Shaft	1
8	G34-08	Retaining Ring	1
9	G34-09	Retaining Ring	1
10	101322	Bolt	4
11	103281	Nut	7
12	101320	Bolt	4
13	101091	Lockwasher	8
14	006084	Drum Disc - 24.0 Diameter	1
15	006069	Drum Disc - 24.0 Dia. for 10.0 Drum Dia.	1
16	G23-27	Drum Core Segment - 4.5 Wide, 5.0 - 9.5 Dia.	4
17	101040	Bolt	4
18	101090	Lockwasher	4
19*	017045	Spring Motor Kit - Standard Rotation	1
20*	G31-02	Pawl Spring	2
21*	G30-02	Pawl	2

ITEM	PART NO.	DESCRIPTION	REQ'D
22	G51-23	Gasket	1
23	G27-42	Hub Cover	1
24	101220	Rd. Hd. Mach. Screw	3
25	101086	Lockwasher	3
26	G51-26	Gasket	1
27	105049	Bolt	4
28	101461	Reducer - for .75 I.D. Hose	1
29	106267	Tee - for .75 I.D. Hose	1
30	101462	Reducer - for .75 I.D. Hose	2
31*	102160	Swivel Joint - for .75 I.D. Hose	1
32	027257	Hose Adapter	2
33	000438	Shaft Assembly	1
34	G07-30	Spring	1
35	G46-08	Holding Dog	1
36	G34-10	Snap Ring	1
37	101060	Bolt	2
38	101093	Lockwasher	2
39	G45-13	Ratchet Plate	1
40	G18-35	Spacer	4
41	101355	Bolt	4
42	101346	Nut	4

*Recommended spare parts for approximately one year service.

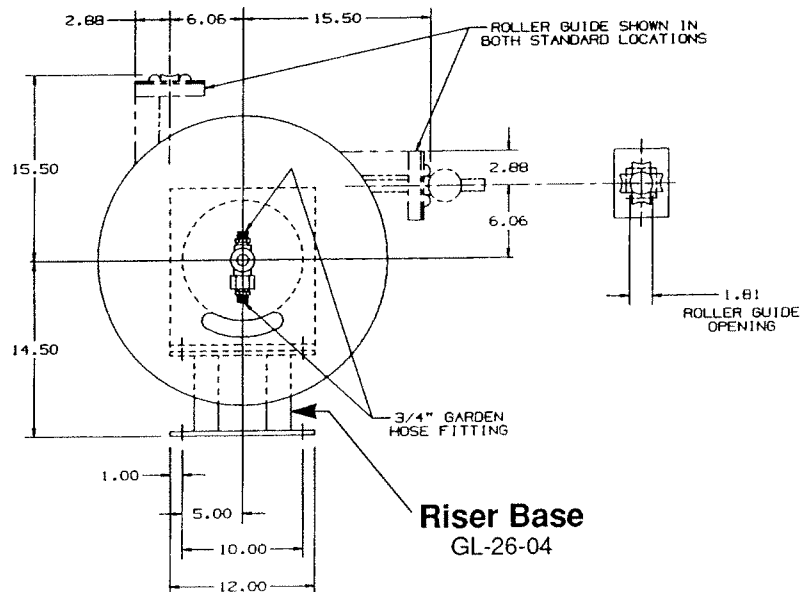
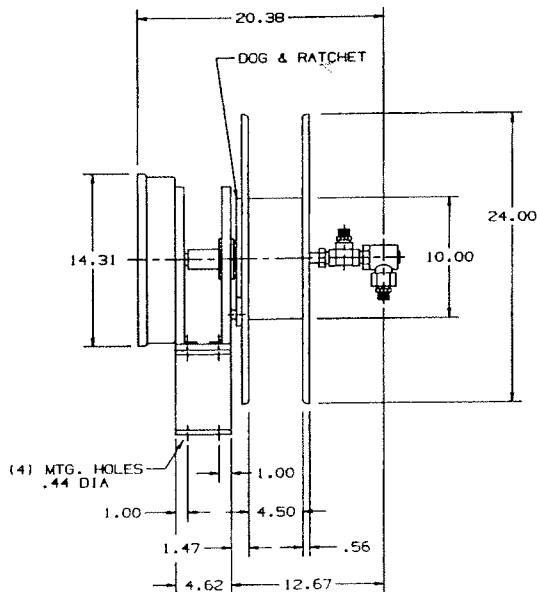
Part No. 028924

J62A-12-104524-KM Hose Reel



Part No. 02892401

J62A-12-104524-KM Hose Reel
with Riser Base GL-26-04



WARRANTY

Gleason warrants for a period of twelve (12) months after date of shipment, all goods manufactured by it to be free from defects in material and workmanship. If, within such warranty period, any such goods are proved, to Gleason's satisfaction, to be defective, such goods shall be repaired or, at Gleason's option, replaced f.o.b. Gleason's factory, without charge. Gleason's obligation hereunder shall be confined to such repair or replacement and shall be further conditioned upon Gleason's receiving written notice of any alleged defect within 10 days after its discovery and, at Gleason's option, the return of the allegedly defective goods to Gleason, f.o.b. its factory.

The foregoing warranty shall not apply to goods not manufactured by Gleason, or to goods which shall have been repaired or altered by others than Gleason so as, in Gleason's judgement, adversely affect the same, or which shall have been subject to other than normal use of service, negligence, accident, or improper maintenance care, or storage. With respect to goods furnished but not manufactured by Gleason, the warranty obligations of Gleason shall in all respects conform and be limited to the warranty extended to Gleason by the supplier.

The foregoing warranty is in lieu of all other express or implied warranties (except of title) and of all other obligations of Gleason.

Gleason Reel Corp.
P.O. Box 26 Mayville, WI 53050
Phone 414/ 387-4120 Fax 414/387-4189



BULLETIN KMJ62A
MAY 1990
PRINTED IN U.S.A