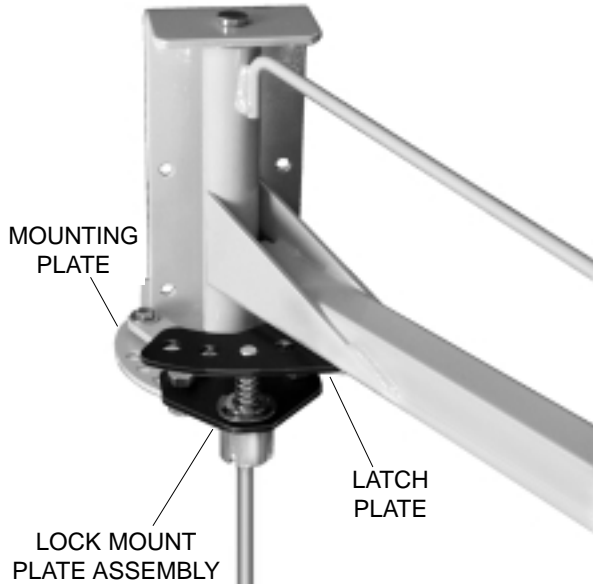


INSTALLATION INSTRUCTIONS

MODEL W5S-BMLK SWING BOOM LOCK

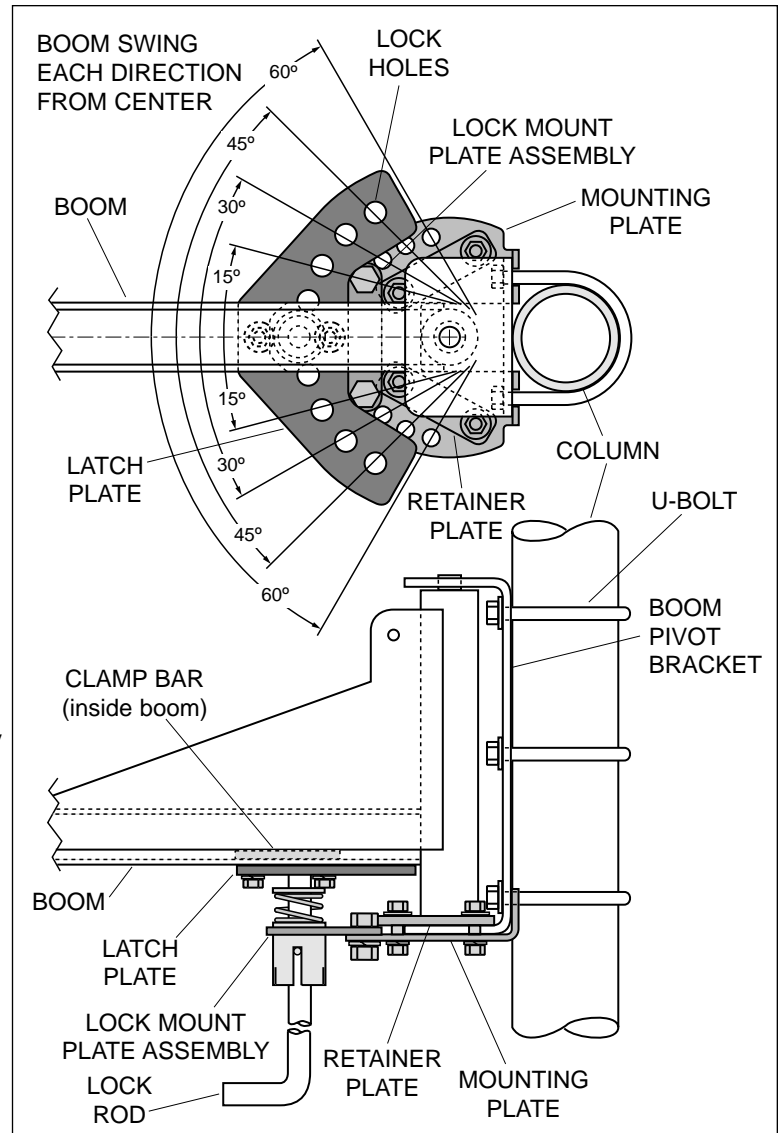


INTRODUCTION:

The Model W5S-BMLK Swing Boom Lock mounts beneath the swing boom pivot bracket. A spring loaded lock rod may be inserted into pre-drilled holes in the boom in the centered position and at 15°, 30°, 45° or 60° in either direction. The lock rod may also be retracted allowing free 90° swing in either direction. Only standard wrenches are required for installation.

INSTALLATION:

1. Become familiar with drawings (right). There is no need to remove boom from column when installing boom lock.
2. Hook mounting plate onto underside and back of boom pivot bracket. Lay clamp plates atop bottom flange of pivot bracket and align holes with holes in mounting plate.
3. Insert bolts with flat washers through clamp plate and mounting plate. NOTE: Bolts go beside, not through, pivot bracket. Secure assembly with nuts, lock washers and flat washers. Make sure mounting plate is properly aligned, with hooks tight against boom pivot bracket. Securely tighten bolts.
4. Align lock mount plate assembly on mounting plate. Secure with 1/2" bolt, lock washer and hex nut.
5. Install latch plate to underside of boom. Latch plate is held in place by a clamp bar inside of boom. Remove end cap, end stop and trolley. Slide latch plate clamp bar into end of boom. Replace trolley, end stop and end cap.
6. Position latch plate so that lock rod will engage holes in all boom positions. Securely tighten bolts.
7. To lock/unlock boom, pull lock rod to clear lock holes. When desired position is achieved, release lock rod to engage proper hole. To disengage lock, pull lock rod so roll pin clears slots and twist 90°, seating roll pin in short slots



Workplace Solutions

P.O. Box 26 • 600 S. Clark St.
 Mayville, WI 53050
 Phone: 920-387-4120
 Fax: 800-236-7335