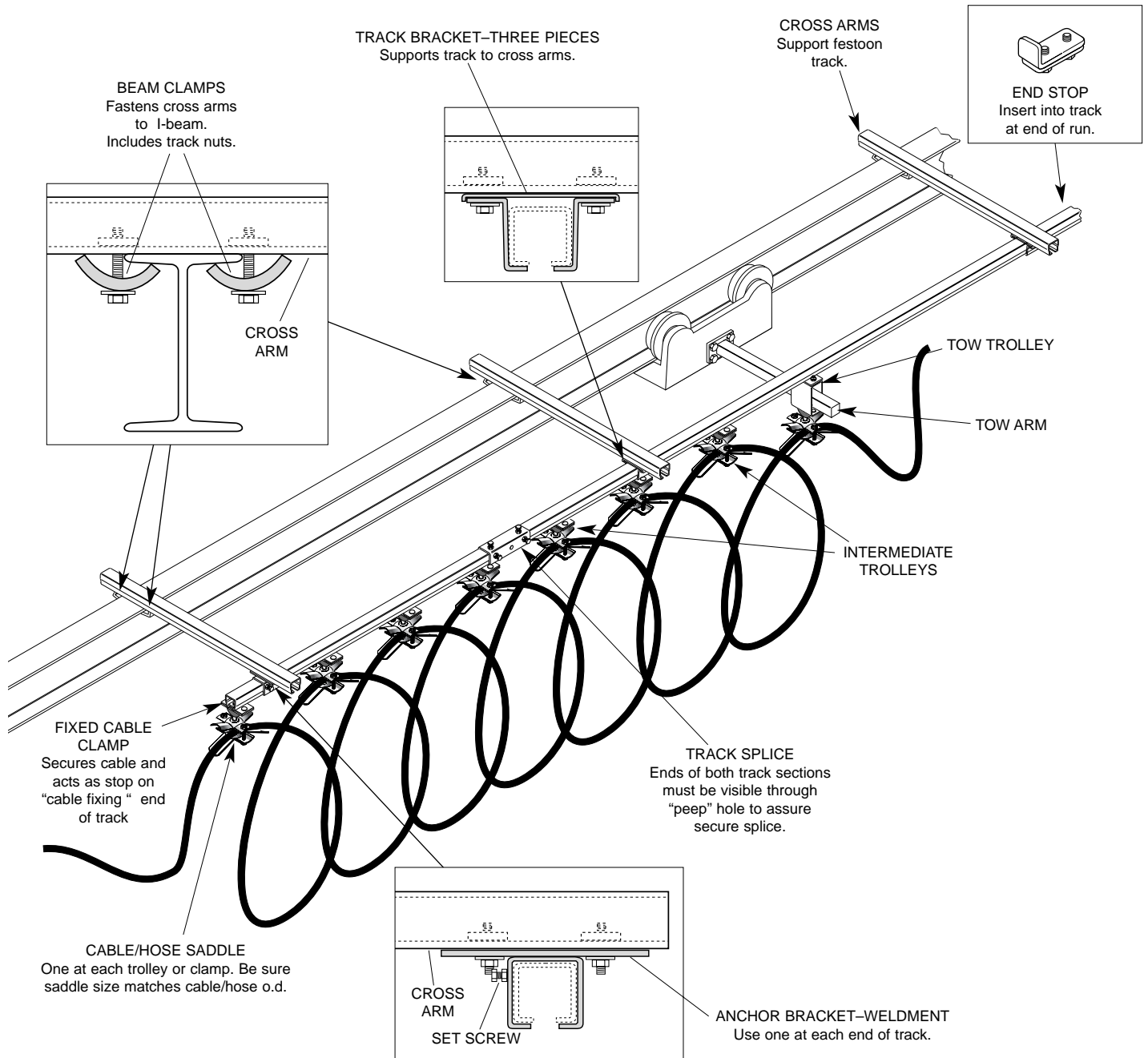


# INSTALLATION INSTRUCTIONS

## **STEEL TRACK FESTOON SYSTEM for ROUND CABLE/HOSE**



### INSTALLATION

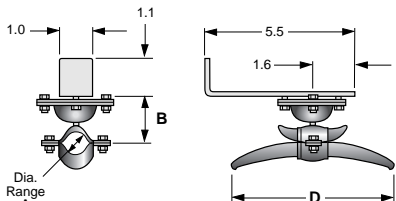
1. Clamp cross arms to supporting I-beam. Spacing between arms must not exceed 6' (1.8m) on center. Securely tighten clamps.
2. Hang festoon rail sections from bottom of arms using anchor brackets (one each end of system) and track brackets. Use track splices to join track sections.  
 NOTE: View through hole in splice to make sure both sections of track are inserted half way.
3. Carefully level and align track. **Festoon track must be parallel to crane track.** Shim or adjust cross arms as required. Securely tighten all set screws on anchor brackets and splice brackets.
4. Insert end stop into end of track opposite cable fixing end. Clamp tightly in place.
5. Insert tow trolley into cable fixing end of track followed by intermediate trolleys. (See illustrations above).
6. Insert fixed cable clamp into track with stop angle on clamping bar facing in. Securely tighten in place.
7. Install cable or hose. Number of trolleys in kit assumes 3' loop depth (measured cable saddles to bottom of loops) when trolleys are pushed together. NOTE: Check to make sure saddles are correct size for cable/hose to be installed. See Components, over.
8. Insert tow arm through opening in tow trolley and bolt or weld tow arm to crane. Tow arm must be centered within opening and perpendicular to festoon rail.

# BILLS OF MATERIAL

## Track Festoon Systems

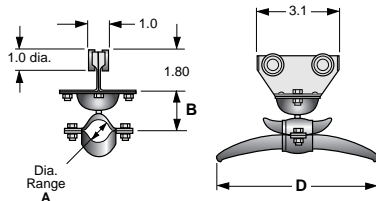
MAXIMUM WORKING TRAVEL Cable O.D. 0.60"-0.94" Cable O.D. 0.95"-1.25"	10'	20'	30'	40'	50'	60'	70'	80'	90'	100'
		RCG28001	RCG28002	RCG28003	RCG28004	RCG28005	RCG28006	RCG28007	RCG28008	RCG28009
	RCG28101	RCG28102	RCG28103	RCG28104	RCG28105	RCG28106	RCG28107	RCG28108	RCG28109	RCG28110
<b>SYSTEM INCLUDES:</b>										
Roller Track (10 foot sections)	1	2	3	4	5	6	7	8	9	10
Track Splice (Connects 10' track sections)	0	1	2	3	4	5	6	7	8	9
Track Bracket (Supports mid-sections of track)	0	2	4	6	8	10	12	14	16	18
Anchor Bracket (Supports ends of track)	2	2	2	2	2	2	2	2	2	2
30" Cross Arms (Support festoon track)	2	4	6	8	10	12	14	16	18	20
Locking Beam Clamp (Clamps cross arms to I-beam crane rail)	4	8	12	16	20	24	28	32	36	40
End Stop	1	1	1	1	1	1	1	1	1	1
Fixed Clamp (Secures cable/hose on fixed end)	1	1	1	1	1	1	1	1	1	1
Tow Trolley (First trolley on moving end)	1	1	1	1	1	1	1	1	1	1
Intermediate Trolley	2	3	5	6	8	10	12	14	16	18
Tow Arm (Allows machine to move tow trolley)	1	1	1	1	1	1	1	1	1	1

## INDIVIDUAL COMPONENTS



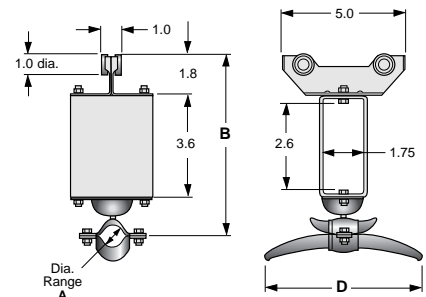
ROUND CABLE FIXED CLAMP

CATALOG NUMBER	CABLE O.D. RANGE-A	B	D	WGT.
C35-RE-12	0.60"-0.94"	1.40"	3.90"	2 lbs
C35-RE-13	0.95"-1.25"	1.65"	5.60"	2 lbs



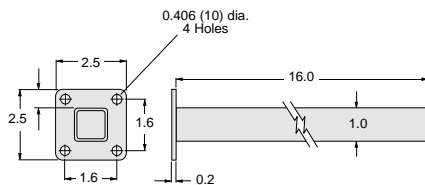
ROUND CABLE INTERMEDIATE TROLLEY

CATALOG NUMBER	CABLE O.D. RANGE-A	B	D	WGT.
C35-RC-12	0.60"-0.94"	1.25"	3.9"	1 lbs
C35-RC-13	0.95"-1.25"	1.50"	5.6"	1 lbs



ROUND CABLE TOW TROLLEY

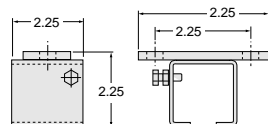
CATALOG NUMBER	CABLE O.D. RANGE-A	B	D	WGT.
C35-RT-12	0.60"-0.94"	6.70"	3.9"	3 lbs
C35-RT-13	0.95"-1.25"	6.90"	5.6"	3 lbs



TOW ARM  
CTA-01

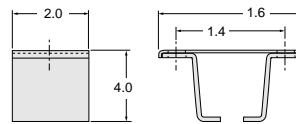
Weight = 3.00 lbs

Attaches to your machine and inserts into Tow Trolley to pull or push the system.



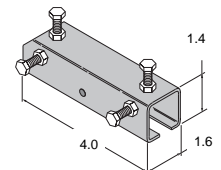
ANCHOR BRACKET  
C35-AB

Weight = 0.63 lbs



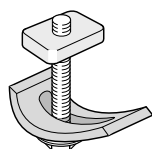
TRACK BRACKET  
C35-TB

Weight = 0.50 lbs



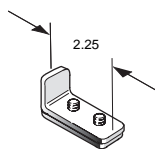
TRACK SPLICE  
C35-TSA

Weight = 1.0 lbs



BEAM CLAMP  
C35-BCA

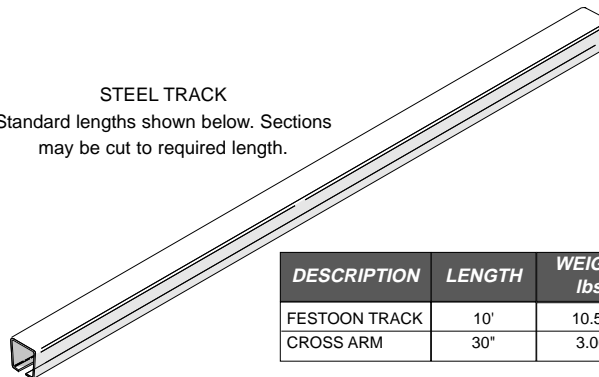
Weight = 0.25 lbs



END STOP  
C40-ES-Z

Weight = 0.30 lbs

STEEL TRACK  
Standard lengths shown below. Sections may be cut to required length.



DESCRIPTION	LENGTH	WEIGHT lbs.	CATALOG NUMBER
FESTOON TRACK	10'	10.50	C35-TR-10
CROSS ARM	30"	3.00	C35-TR-2.5



Workplace Solutions

P.O. Box 26 • 600 S. Clark St.  
Mayville, WI 53050  
920-387-4120