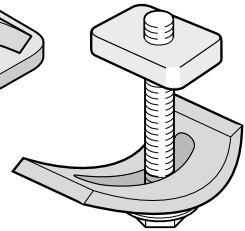
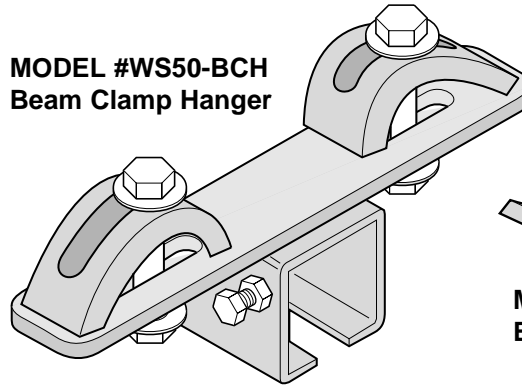


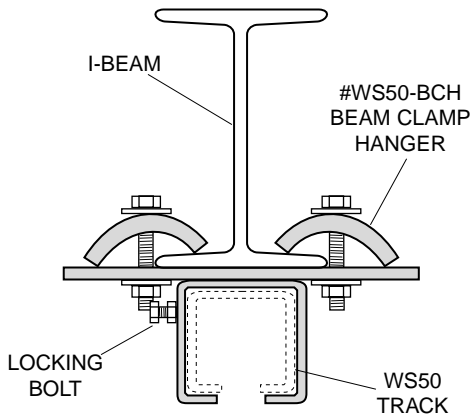
BEAM CLAMPS...MOUNT TOOL RAILS TO I-BEAMS WITHOUT DRILLING OR WELDING

Now you can quickly and accurately hang and align WS50 tool rails beneath or beside beams. Model #WS50-BCH Beam Clamp Hanger Bracket or separate Model #WS-BC Beam Clamp (with track nut) require no drilling or welding. Hanger Brackets attach to beam flanges from 2.625" to 5.25" wide. Beam Clamps affix WS50 support arms to top flange (Figure 3) or WA50 aluminum track to bottom flange (Figure 3) or at an angle to beam (Figure 2). All components are zinc plated.

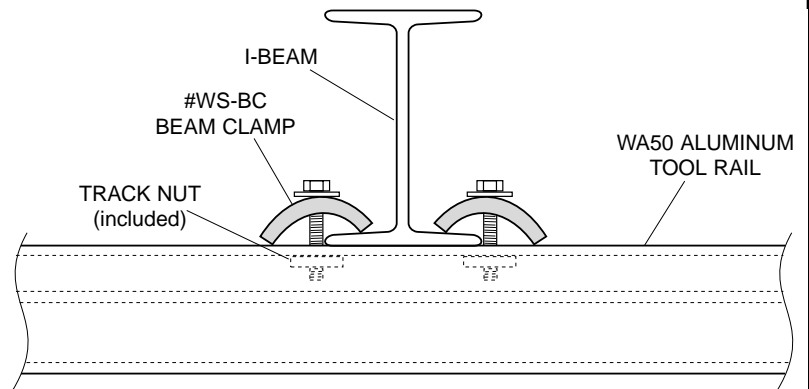
MODEL #WS50-BCH Beam Clamp Hanger



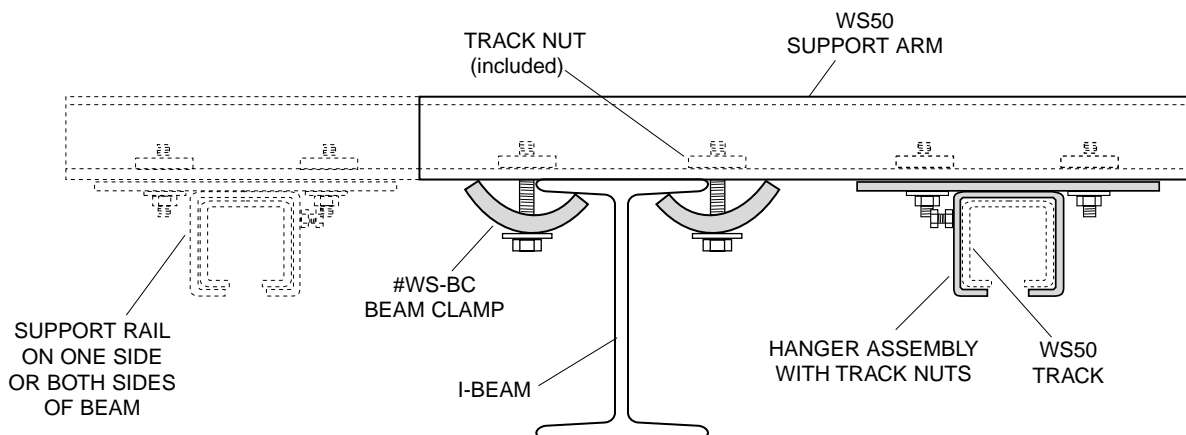
MODEL #WS-BC Beam Clamp



**Figure 1
TOOL RAIL BENEATH I-BEAM,
PARALLEL TO BEAM**



**Figure 2
ALUMINUM TOOL RAIL BENEATH I-BEAM,
PERPENDICULAR (BEAM-TO-BEAM)**



**Figure 3
TOOL RAIL BESIDE I-BEAM, ONE OR BOTH SIDES**

