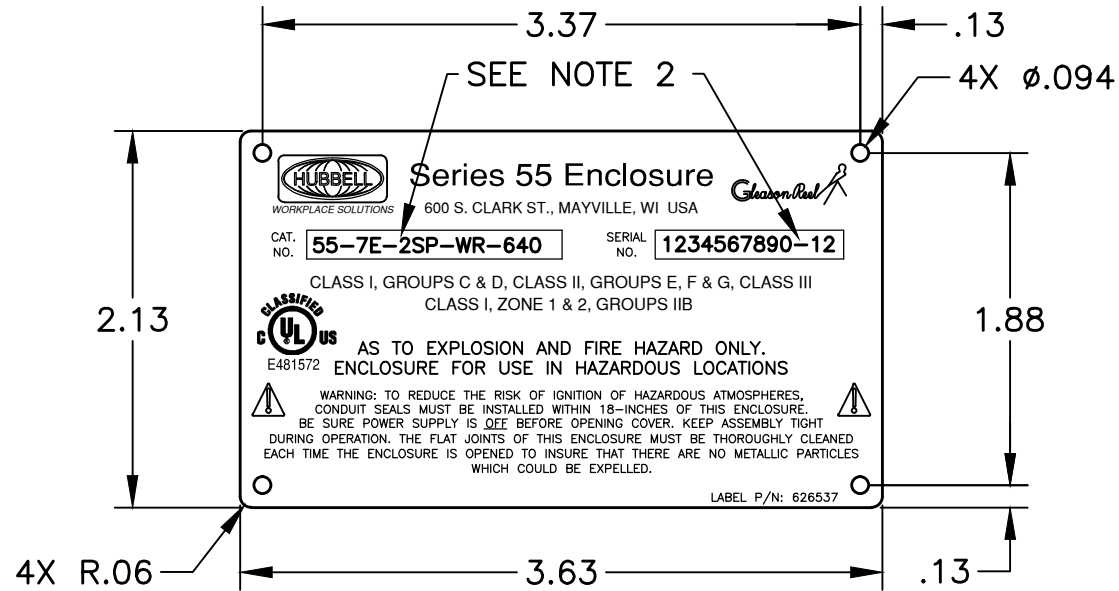



**NOTES:**

- 1.) PURCHASED PART –  
MAT'L, 0.025 THK ALUMINUM  
RED BACKGROUND  
BARE METAL TEXT AND LOGOS
- 2.) THESE TWO BOXES ARE TO BE  
BE BARE METAL AND LEFT BLANK.  
TEXT SHOWN FOR REFERENCE ONLY  
AND WILL BE ETCHED OR STAMPED  
AT GLEASON REEL AS REQUIRED

REVISIONS			
REV	DESCRIPTION	DATE	APPROVED
A	NEW RELEASE, ECN #59059	1/19/16	JWJ



UNLESS OTHERWISE NOTED ALL DIMENSIONS ARE INCHES. TOLERANCES AS FOLLOWS: DECIMAL .X ± .1 DECIMAL .XX ± .03 DECIMAL .XXX ± .010 ANGLES DEG-MIN ± 1'0"	APPLICATION		 <b>GLEASON REEL CORP.</b> MAYVILLE, WISCONSIN
	NEXT ASSY	SIM TO	
THIS DRAWING AND ALL INFORMATION HEREON IS THE PROPERTY OF GLEASON REEL AND CONFORMS TO GLEASON REEL ENG MANUAL. IT MUST NOT BE COPIED, REPRODUCED OR SUBMITTED TO OTHERS WITHOUT WRITTEN AUTHORIZATION AND ALL REPRODUCTIONS ARE SUBJECT TO RETURN ON DEMAND.	62651807	---	<b>NAMEPLATE</b> <b>EXPLOSION PROOF SERIES 55</b>
	DRAWN JWJ	DATE 12/16/15	
	APPROVED	DATE	REV A