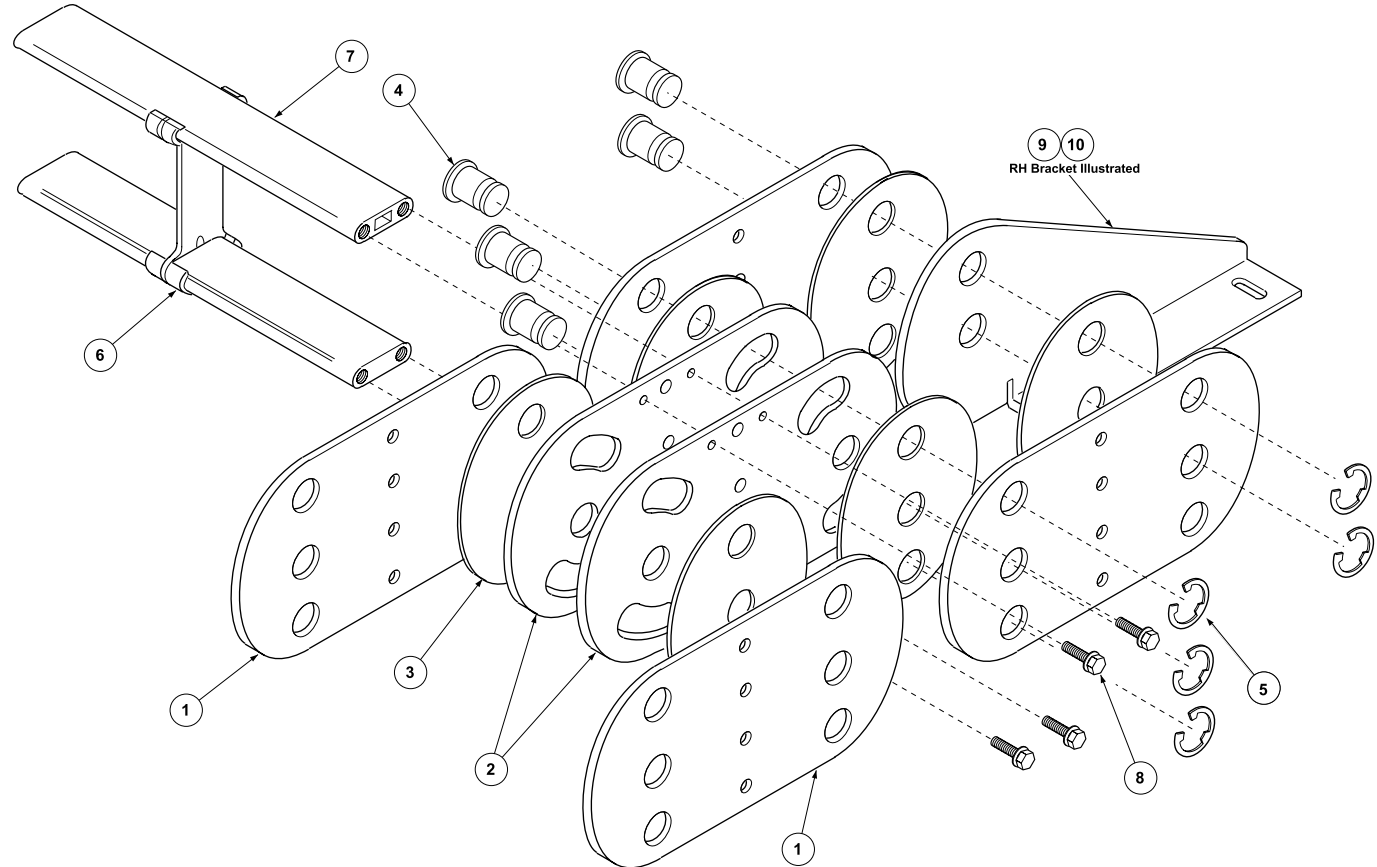


## E-Type Model PT38E-A1\* Parts List

\*The last digit in the Model Number refers to the number of vertical separators (item 6) per carrier position.

| ITEM | DESCRIPTION               | PART NO. |
|------|---------------------------|----------|
| 1    | Outer Link                | P300-00  |
| 2    | Inner Link - 5.00 radius  | P300-01  |
|      | 6.00 radius               | P300-02  |
|      | 7.88 radius               | P300-03  |
|      | 11.38 radius              | P300-04  |
|      | 15.38 radius              | P300-05  |
| 3    | Anti-Friction Disc        | 026728   |
| 4    | Hinge Pin                 | 058505   |
| 5    | E-Ring                    | 102259   |
| 6    | Channel Separator         | 039686   |
| 7    | Alum. Channel - 4.00" lg. | 02705801 |
|      | 6.00" lg.                 | 02705802 |
|      | 8.00" lg.                 | 02705803 |
|      | 10.00" lg.                | 02705804 |
|      | 12.00" lg.                | 02705805 |
|      | 14.00" lg.                | 02705806 |
|      | 16.00" lg.                | 02705807 |
| 8    | Whiz-Lock Screw           | 106144   |
| 9    | LH Mounting Bracket       | P07-106  |
| 10   | RH Mounting Bracket       | P07-107  |



| SIDE CHAIN ASSEMBLY<br>(Includes items 1 - 5)<br>Qty. 1 = one 1 ft. section<br>for one side only.<br>L.H. and R.H. chains are identical. |          |
|--|----------|
| RADIUS   | PART NO. |
| 5.00   | 03173901 |
| 6.00   | 03173902 |
| 7.88   | 03173903 |
| 11.38  | 03173904 |
| 15.38  | 03173905 |

PowerTrak Splice Kit P/N **034420** includes:  
(6) hinge pins, (4) anti-friction discs, and  
(12) E-ring fasteners



**Gleason Reel Corp.**  
600 South Clark St. • P.O. Box 26  
Mayville, WI 53050  
Phone: 920-387-4120  
Fax: 920-387-4189  
[www.hubbell-gleason.com](http://www.hubbell-gleason.com)