

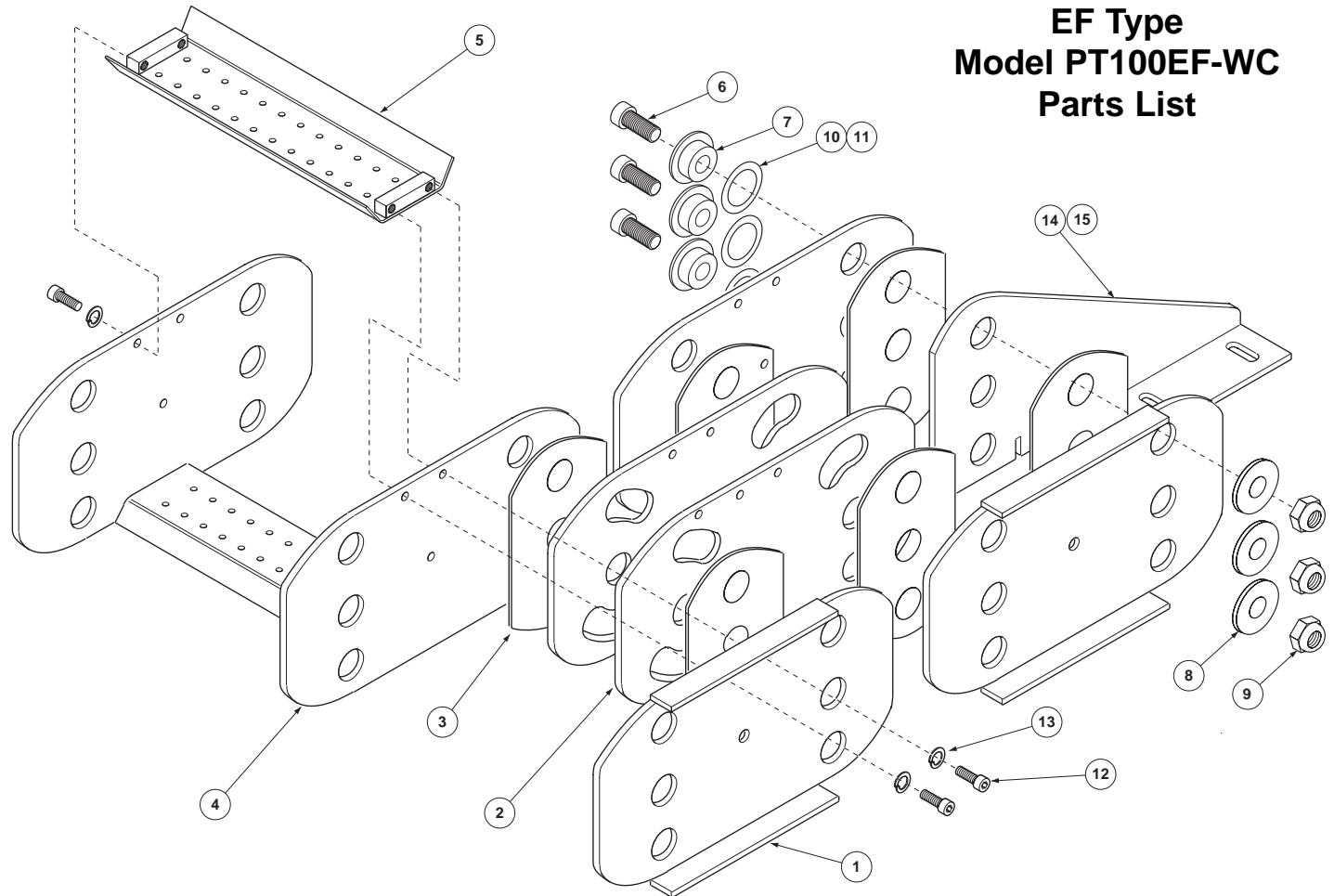
GLEASON® PowerTrak

EF Type Model PT100EF-WC Parts List

| ITEM | DESCRIPTION | PART NO. |
|-------|--------------------------------------|----------|
| 1 | Outer Link W/ Flange | P100E-99 |
| 2 | Inner Link--19.00 radius | P100E-01 |
| | " 25.00 radius | P100E-02 |
| 3 | Anti-friction Plate | 029012 |
| 4 & 5 | -See Below- | |
| 6 | Socket Head Cap Screw | 029227 |
| 7 | Flanged Bushing | 048977 |
| 8 | Washer | 042910 |
| 9 | Hex Locknut | 028502 |
| 10 | Shim Washer, 1.53 ID x .01 thick* | 029024 |
| 11 | Shim Washer, 1.53 ID x .02 thick* | 029025 |
| 12 | Skt. Hd. CSCR, M8-1.25 x 20 | 029020 |
| 13 | Lockwasher, M8 | 023279 |
| 14 | Mounting Bracket, L.H. | P07-349 |
| 15 | Mounting Bracket, R.H. | P07-350 |

* Not required on all systems.

| CARRIER WIDTH | ITEM 4 CHANNEL WELDMENT | ITEM 5 CHANNEL CARRIER |
|---------------|-------------------------|------------------------|
| 8.00" | 02901001 | 02901301 |
| 10.00" | 02901002 | 02901302 |
| 12.00" | 02901003 | 02901303 |
| 14.00" | 02901004 | 02901304 |
| 16.00" | 02901005 | 02901305 |
| 18.00" | 02901006 | 02901306 |
| 20.00" | 02901007 | 02901307 |
| 22.00" | 02901008 | 02901308 |
| 24.00" | 02901009 | 02901309 |



GLEASON REEL CORP.
P.O. Box 26 • 600 South Clark St.
Mayville, WI 53050-0026
Phone 920-387-4120 • Fax 920-387-4189