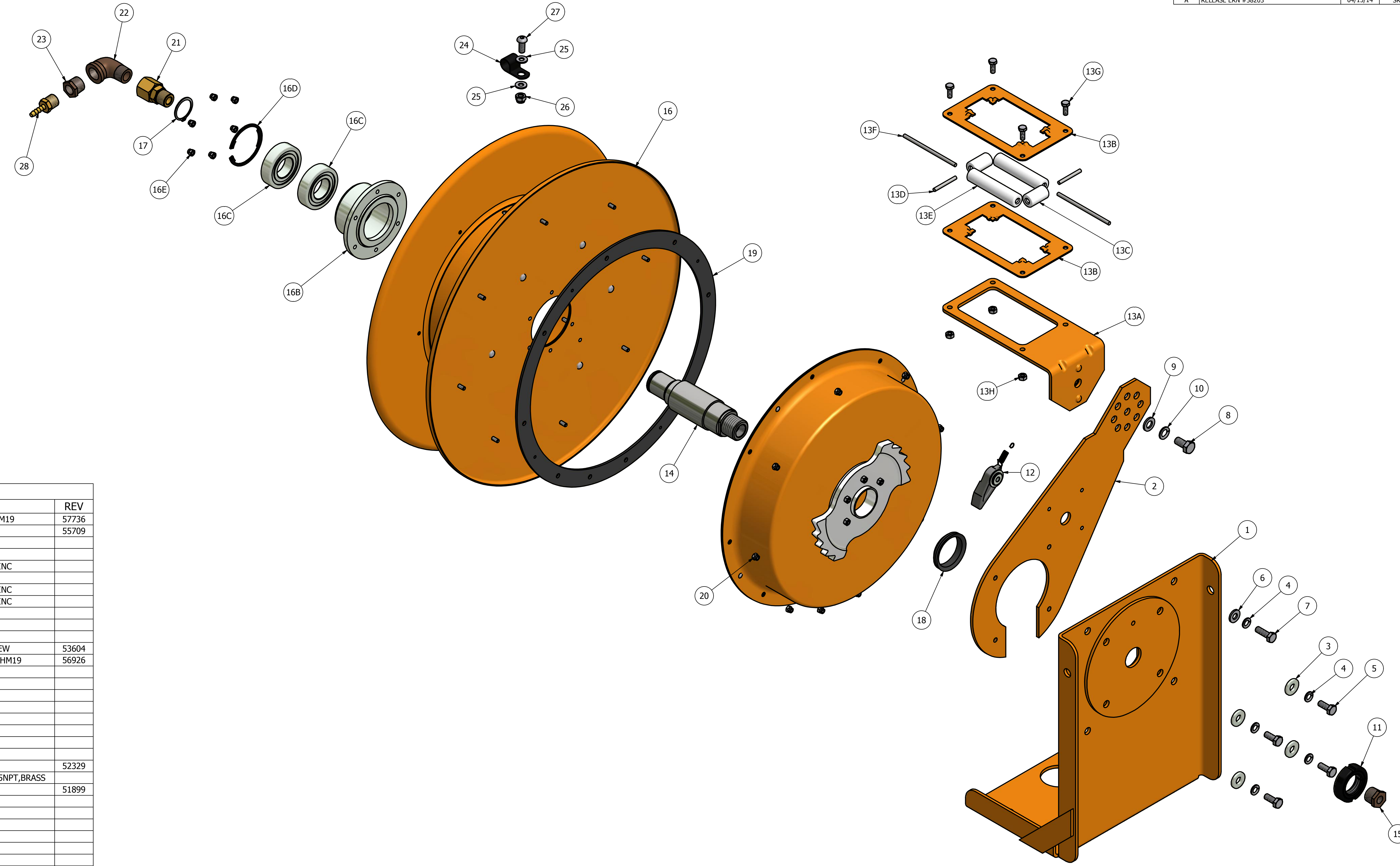


NOTES



BILL OF MATERIALS

ITEM	QTY	PART NUM	DESCRIPTION	REV
1	1	032632	VERTICAL FRAME WELDMENT-HM19	57736
2	1	054603	ROLLER GUIDE ARM-CM19	55709
3	4	036013	FLAT WASHER DETAIL	
4	5	023279	LOCK WASHER,M8,ZINC	
5	4	027887	SCREW M8-1.25 X 20LG,HHCS,ZINC	
6	1	028974	FLAT WASHER,M8,ZINC	
7	1	029343	SCREW M8-1.25 X 25LG,HHCS,ZINC	
8	1	028131	SCREW M10-1.5 X 20LG,HHCS,ZINC	
9	1	018972	FLAT WASHER,M10,ZINC	
10	1	028138	LOCK WASHER,M10,ZINC	
11	1	021484	CLAMP NUT ASSEMBLY	
12	1	054625	LOCKING DOG ASSEMBLY-CM-NEW	53604
13	1	024473	ROLLER OUTLET ASSEMBLY-CM/HM19	56926
13A	1	024474	ROLLER GUIDE BRACKET	
13B	2	024475	ROLLER RETAINER PLATE	
13C	2	024470	ROLLER-SHORT	
13D	2	024469	ROLLER PIN-SHORT	
13E	2	024477	ROLLER-LONG	
13F	2	024476	ROLLER PIN-LONG	
13G	4	03508704	SCREW M6-1.0 X 16,HHCS,SST	
13H	4	028271	ESNA NUT,M6-1.0,SST	
14	1	027487	MAIN SHAFT-HM19-1/2"NPT	52329
15	1	024520	REDUCER BUSHING,.50NPT X .25NPT,BRASS	
16	1	024297	SPOOL ASSEMBLY-HM19	51899
16A	1	027409	BEARING HOUSING ASSEMBLY	
16B	1	027400	BEARING HOUSING	
16C	2	027405	BALL BEARING	
16D	1	027407	RETAINING RING	
16E	6	028144	ESNA NUT,M5-0.8,ZINC	
17	1	027406	RETAINING RING	
18	1	025032	V-RING SEAL V-45S 1.70/1.85 DIA.	
19	1	022734	GASKET DETAIL-CM16/19-SPRING COVER	56915
20	9	028144	ESNA NUT,M5-0.8,ZINC	
21	1	024513	SWIVEL JOINT,1/2"NPT,STRAIGHT	
22	1	024514	STREET ELBOW,.50NPT,BRASS	
23	1	024519	REDUCER BUSHING,.50NPT X .38NPT,BRASS	
24	1	604127	CABLE CLAMP-ARDEN-.50"DIA.	
25	2	101206	FLAT WASHER,.25,ZINC	
26	1	P06-01	ESNA NUT,.31-18UNC,ZINC	
27	1	023304	SCREW .31-18UNC X .75,SBHCS,ZINC	
28	1	024517	HOSE BARB,.50NPT X .25"I.D. HOSE,BRASS	
29	1	CONTACT SALES	SPRING MOTOR ASSY-PER ORDER	53604

UNLESS OTHERWISE NOTED ALL DIMENSIONS ARE INCHES. TOLERANCES AS FOLLOWS:

DECIMAL	.X ± .1
DECIMAL	.XX ± .03
DECIMAL	.XXX ± .010
ANGLES	DEG-MIN ± 1°0'

THIS DRAWING AND ALL INFORMATION HEREON IS THE PROPERTY OF GLEASON REEL AND CONFORMS TO GLEASON REEL ENGINEERING POLICY. IT MUST NOT BE COPIED, REPRODUCED, OR SUBMITTED TO OTHERS WITHOUT WRITTEN AUTHORIZATION AND ALL REPRODUCTIONS ARE SUBJECT TO RETURN ON DEMAND.

APPLICATION	NEXT ASSY	SIM TO

GLEASON REEL CORP. MAYVILLE, WISCONSIN  
 Inventor: *Dr. [Signature]*  
 Drawn: *SRK*

**PARTS LIST**  
**HOSEMASTER 19**  
**FOR 1/4" I.D. HOSE**

DATE	04/15/14	FSCM NO.	DWG NO.	REV
DATE			<b>HM19-4</b>	<b>A</b>

DO NOT SCALE DRAWING! SHEET 1 OF 1