

INSTALLATION and MAINTENANCE INSTRUCTIONS CURVED RAIL SYSTEM COMPONENTS

⚠ WARNING
Failure to read, understand, and follow these installation instructions may result in personal injury if rail is improperly installed.

INTRODUCTION: The Curved Rail System consists of **straight and curved track sections**, **splice angle kits** for joining track sections, **end stop kits** for use at each end of the system, and **tool hook or festoon trolleys**. These instructions provide information on hanging and joining track sections as well as installing and adjusting trolleys.

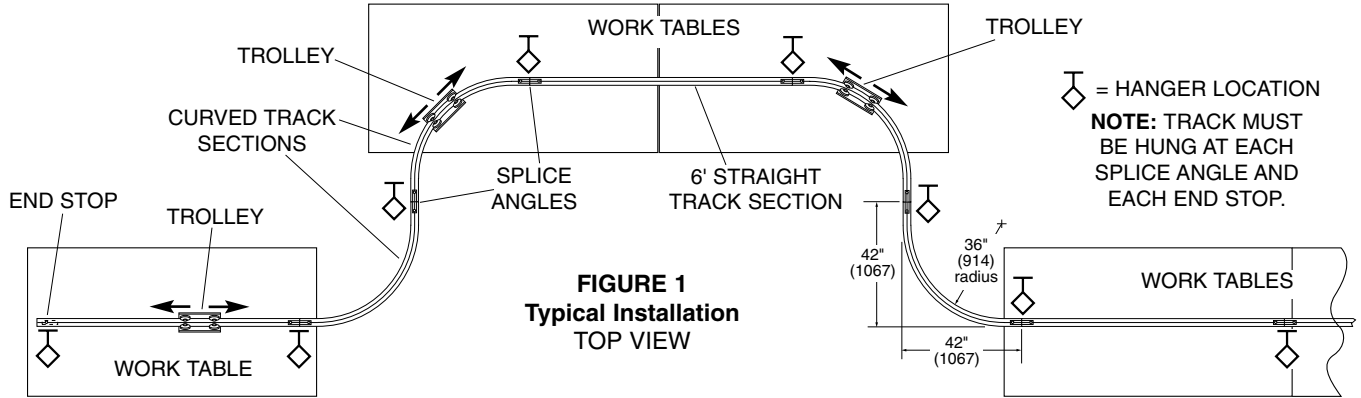


FIGURE 1
Typical Installation
TOP VIEW

TRACK INSTALLATION

NOTE: Each track section must be supported at both ends.

Splice angle kits join and align two track sections and provide a bolt for hanging track. End stop kits, which include a hanging bolt, are used at each end of the system. They provide for track hanging and also stop the trolleys. See Figure 1, above, and Figures 2 & 3, below.

STEP 1– Lay out track sections on floor beneath area where track is to be hung. All curved sections are 90° and have a 36"(914mm) radius but include a 6"(152mm) straight section making their overall length 42"(1067mm). Check to make sure there is hanging structure above each joint and at both ends of the system. See Figure 1.

NOTE: Hanging structure must be strong enough to support full weight of system, including track, trolleys, balancers, tools, hose, etc.

STEP 2– Hang track, assembling as you go, using hanging bolts in splice angle kits or end stop kits. See Figures 2 and 3. To facilitate trolley installation, do not permanently install end stop or hang track at one end of system. Temporarily support end of track until after trolley installation. **NOTE:** If necessary to reach support structure, substitute longer 5/16-18 bolts or threaded rod for 3.5" long bolts provided.

STEP 3– Carefully level track and align sections. Joints must be smooth and all nuts fully tightened.

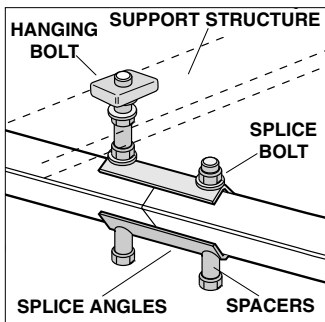


FIGURE 2
Splice Angles

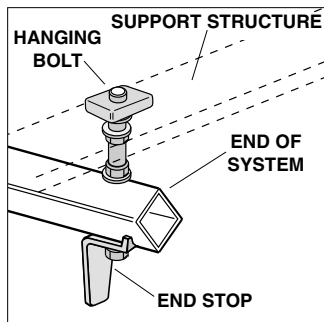


FIGURE 3
End Stop

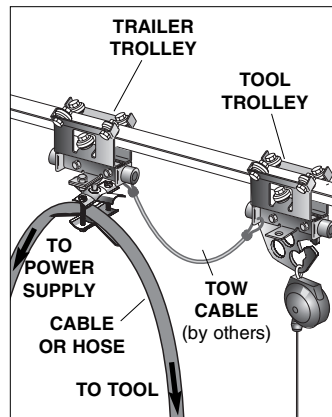


FIGURE 4
Trailer Trolley

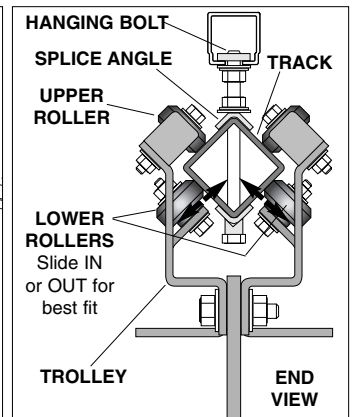


FIGURE 5
Adjusting Trolley

TROLLEY INSTALLATION

NOTE: The installation described is a curved tool rail. Therefore the primary trolley includes a tool hook. Since supplying power to a tool which travels around curves can prove difficult, a **festoon trailer trolley** may be used to facilitate management of power cord or hose. See Figure 4.

STEP 1– If adding trolley to existing track, remove hanger and end stop from one end of system. Temporarily support track end.

STEP 2– Slide trolley(s) onto end of track that temporarily has no end stop. If using a festoon trailer trolley, be sure it is installed between tool hook trolley and power supply. See Figure 4.

STEP 3– Rehang or complete hanging of track. Attach end stop with hanging bolt as shown in Figure 3.

STEP 4– Roll trolley(s) along track to check fit. Also check for interference or rough splices. Adjust track as necessary.

STEP 5– If necessary, adjust trolley(s) for proper fit. Loosen (do not remove) nuts securing bottom rollers. See Figure 5. Slide roller assembly in or out as needed. Tighten nuts. Test trolley.



Workplace Solutions

P.O. Box 26
600 South Clark St.
Mayville, WI 53050
Phone 920-387-5195

INSTALLATION INSTRUCTIONS

CURVED TOOL RAIL ON WORKSTATION

INTRODUCTION: The Curved Tool Rail System consists of a **curved track** mounted above a bench or other work station. The track may be hung directly to properly spaced horizontal supports or, if supports cannot be adjusted, to a section of straight track hung from the support rails. . These instructions provide information on hanging the track section as well as installing and adjusting the balancer trolley.

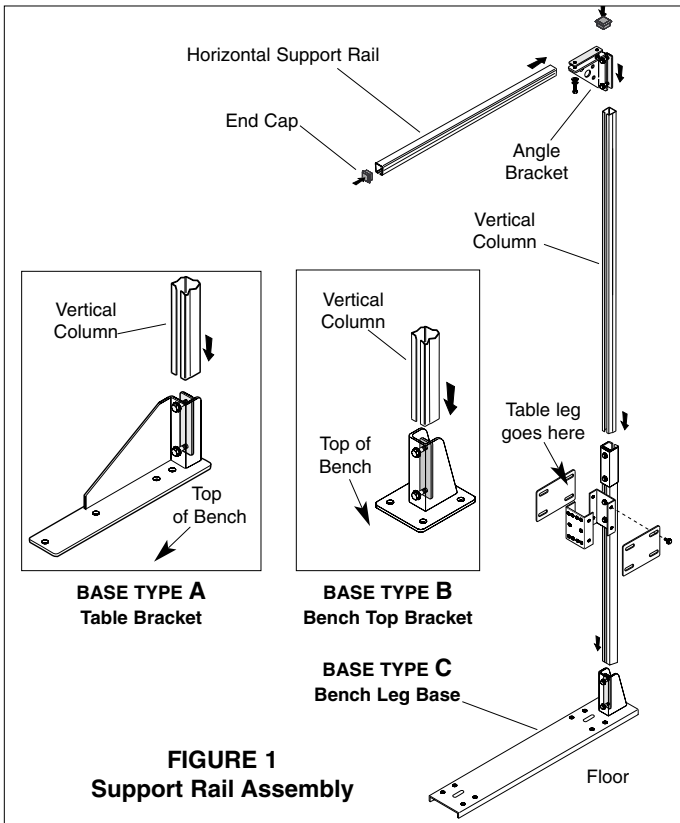


FIGURE 1
Support Rail Assembly

RAIL INSTALLATION

NOTE: Each rail section must be supported in two places. Six hanging holes, spaced at 44"(1118mm), 56"(1422) and 57.9"(1471), are pre-drilled. The end holes (57.9" spacing) are also used for affixing of end stops. A center hanging hole is provided and may be used if additional rigidity is required.

STEP 1– Assemble support structures as shown in Figure 1.
NOTE: Support structure base will match type A, B, or C shown.

STEP 2– Attach support structures to bench. Be sure horizontal rail spacing, center-to-center, matches one of the hole dimensions shown above. Securely affix structures to bench. See Figure 3.

NOTE: Use of backing plates beneath bench top is recommended when using bases A and B. Backing plates are available from factory.

STEP 3– Hang curved rail to support structures.

A. Put 5/16" x 3.5" bolt through V-groove spacer, then through curved rail from under side. Secure bolt with flat washer, split lock washer and 5/16" hex nut. Tighten. See Figure 2 .

NOTE: If end hole in rail is used, slide trolley onto rail prior to hanging and affixing end stop to rail.

B. Thread 5/16" hex nuts, 5/16" split lock washers, 5/16" flat washers, 3/8" flat washers, and universal track nuts onto bolts. Do not tighten. See Figure 2.

C. Slide track nuts into support rails, washers and hex nuts to outside. Position rail as desired and tighten hex nuts to under side of support rail.

STEP 4. Roll trolley onto curved rail. If trolley roller adjustment is needed, see Step 5 and Figure 5, over.

STEP 5. Attach end stops using 5/16" x 2.5" bolts. See Figure 2.

STEP 6. Install end caps in curved rail and support assembly.

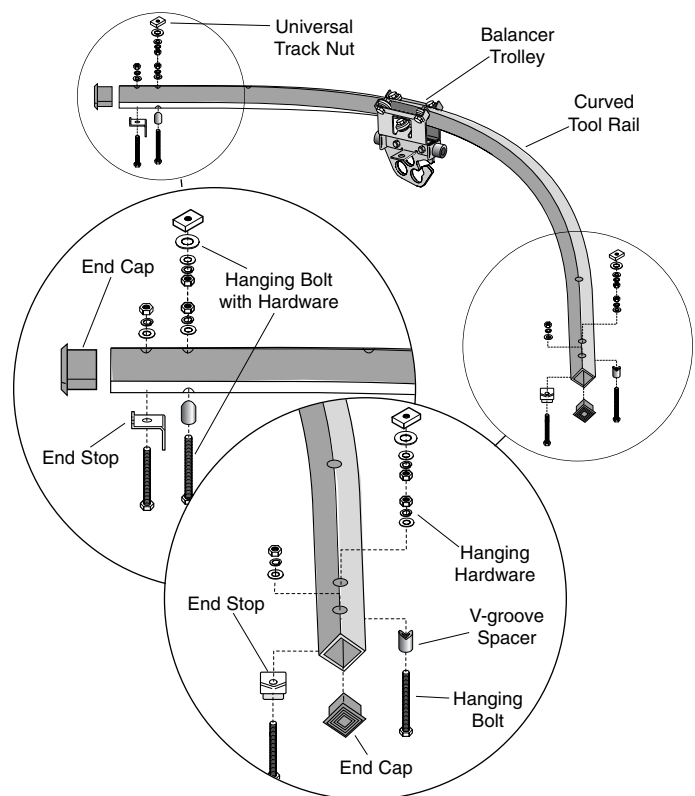


FIGURE 2
Curved Rail; Assembly

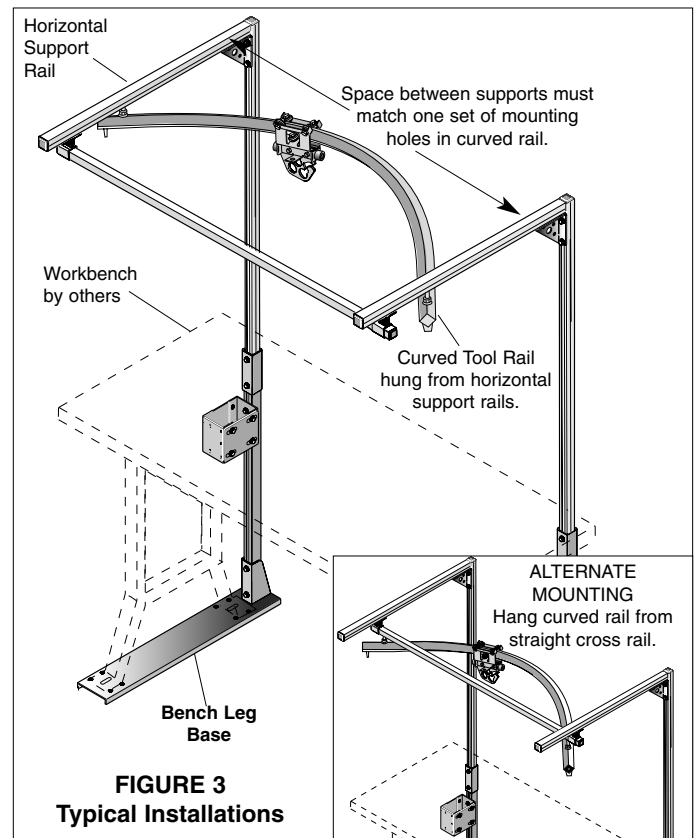


FIGURE 3
Typical Installations