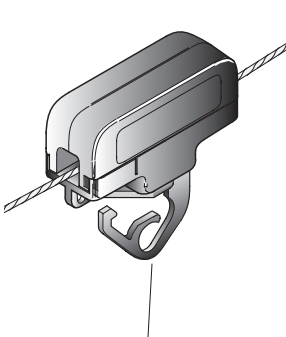


# Lock 'n Roll

## FESTOON TROLLEYS

Parts slide together, lock automatically and the trolley is ready to roll ... no fasteners to drop or lose. Removal or replacement is just as easy. Pre-engineered kits take the mystery out of festooning. Each kit includes everything you need. Just add cable or hose. Also available with tool hanger.



**#WRS-01  
MOLDED NYLON  
TROLLEY**

Includes steel Labyrinth tool hook.



**WRS-02 TROLLEY with CONNECTOR**

Wire rope, tool balancer and air hose not included.

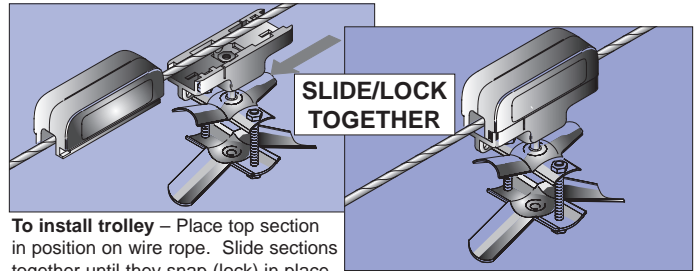
### #WRS-01 SINGLE HOOK TROLLEY

Molded nylon trolley is 3.25" (83mm) long. Wheels are molded Delrin thermoplastic. Includes one steel labyrinth hook for tool mounting. Trolley may be installed on existing wire rope through 3/8" (9mm) O.D. without unhooking and restretching rope. Weight is 4 oz(0.1kg).

### #WRS-02 SINGLE HOOK TROLLEY with HOSE CONNECTOR

Same as #WRS-01 trolley plus longer tool hook and 1/4" air hose connector. Weight is 11 oz(0.15kg).

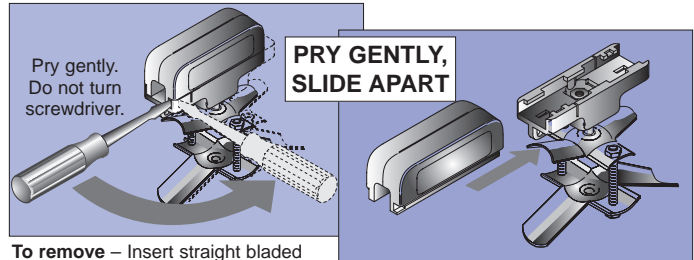
### • INSTALL QUICKLY •



**To install trolley** – Place top section in position on wire rope. Slide sections together until they snap (lock) in place.

**NOTE:** Sections may be assembled in only one way. Slide "un-blocked" end into "un-blocked" end. Do not force.

### • REMOVE EASILY •



**To remove** – Insert straight bladed screwdriver into slot beside cable opening (not slit on side of trolley) and pry gently as shown above. Do not turn screwdriver. **Slide Apart**

### • NO FASTENERS REQUIRED •

Fits standard Wire Rope from

3/16" (5mm) thru 3/8" (9mm)



**#FRT-04**

For round cable or hose, 0.31" thru 0.59"

(7 – 15mm) OD.

Fits 0.25" (6mm) I.D. hose,

600v cable

#16/2–6, #14/2–4 or #12/2.



**#FRT-05**

For round cable or hose, 0.60" thru 0.94"

(15 – 24mm) OD.

Fits 0.38"–0.50" (10–13mm) I.D. hose,

600v cable

#16/7–12, #14/5–12,

#12/3–8, #10/2–6.



**#FRT-06**

For round cable or hose, 0.95"–1.25" (24–32mm) OD.

Fits 0.75" (19mm) I.D. hose.

Special consideration should be given large cable/hose applications.



**#FFT-08**

For flat cable to 2.1" x 0.66"

(54 x 17mm)

**PVC jacketed cable**

#16/4–12, #14/4–12, #12/4–8, #10/4, #8/4, #6/4, and #4/4.



# FESTOON KITS—WIRE ROPE

Kits feature **Lock'n Roll** trolleys and include all necessary wire rope and hardware for complete festoon system. Cable or hose **not included** and must be ordered separately to suit application. Wire rope supplied for 48" loop depth plus extra for fastening at both ends.

### Kit Selection Procedure: You must know...

- 1- CABLE or HOSE...**Use appropriate model chart for type (round or flat) cable/hose. If round, choose correct saddle size (FR04, FR05 or FR06)\*.
- 2- LOOP DEPTH (LD)**...30" loop and 48" loop shown for planning purposes. Final loop depth should be between these two examples. With a given number of trolleys, **longer loop depth = longer travel**. However, loop depth is often dictated by available clearance beneath wire rope.
- 3- ACTIVE TRAVEL (AT)**...Select kit which best fulfills requirements. If your **system length** must be **longer** than system length specified for **active travel length** you require, order by system length so wire rope supplied with kit will not be too short.

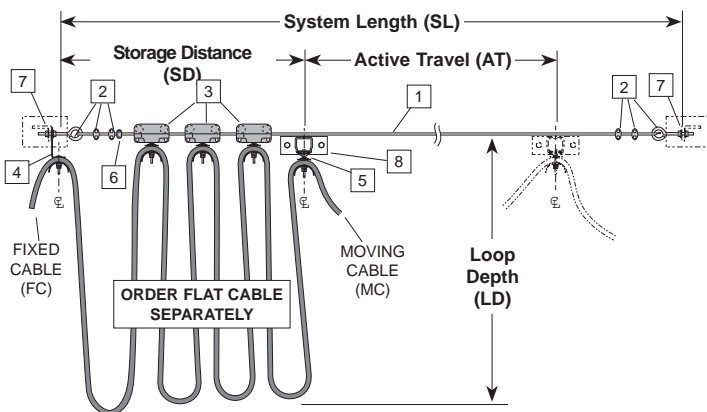
**NOTE: Cable or hose are NOT INCLUDED.** Order, separately, footage shown on model chart plus length needed at each end for hook-up.

## FLAT CABLE KITS

ACTIVE TRAVEL "AT"		KIT NO.	SYSTEM LENGTH "SL"		STORAGE DISTANCE "SD"		<sup>(1)</sup> MINIMUM CABLE REQUIRED	
LOOP DEPTH For planning purposes. <sup>(2)</sup> 30"   48"			LOOP DEPTH For planning purposes. <sup>(2)</sup> 30"   48"		MINIMUM. May be greater with stiff cable or short loop.		LOOP DEPTH For planning purposes. <sup>(2)</sup> 30"   48"	
12'	20'	FF08-02	14'	23'	21"	15'	24'	
16'	27'	FF08-03	19'	30'	25"	20'	32'	
20'	33'	FF08-04	23'	37'	28"	24'	39'	
24'	40'	FF08-05	27'	44'	32"	29'	47'	
28'	47'	FF08-06	32'	51'	35"	34'	55'	
32'	54'	FF08-07	36'	58'	39"	39'	63'	
36'	60'	FF08-08	40'	65'	42"	43'	70'	

<sup>(1)</sup> **MINIMUM CABLE REQUIRED** length listed in chart is enough for **ACTIVE TRAVEL** only, measured centerline to centerline; see diagrams below. **ADD cable or hose to each end** as required for hook-up to your system.

<sup>(2)</sup> **ACTIVE TRAVEL, SYSTEM LENGTH** and **MINIMUM CABLE** values on charts are for 30" or 48" loop depths and are provided as planning guide only. Kits include necessary components for festoon system with 48" loop depth at system length shown. Loop depth may be varied to suit application.

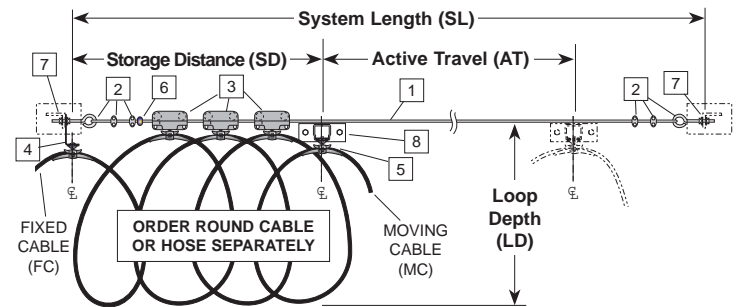


### KIT NUMBER EXPLANATION

Example: **FF**      **08**      -      **03**  
 Type      Saddle size      Number Trolleys  
 (Flat cable)      (0.65" h x 2.0" w)      -      (Three)

## ROUND CABLE & HOSE KITS

ACTIVE TRAVEL "AT"		KIT NO.	SYSTEM LENGTH "SL"		STORAGE DISTANCE "SD"		<sup>(1)</sup> MINIMUM CABLE/HOSE REQUIRED	
LOOP DEPTH For planning purposes. <sup>(2)</sup> 30"   48"			LOOP DEPTH For planning purposes. <sup>(2)</sup> 30"   48"		MINIMUM. May be greater with stiff cable or short loop.		LOOP DEPTH For planning purposes. <sup>(2)</sup> 30"   48"	
10'	18'	FR04*-02	13'	21'	21"	16'	25'	
14'	24'	FR04*-03	17'	27'	25"	22'	34'	
17'	30'	FR04*-04	21'	34'	28"	27'	42'	
21'	37'	FR04*-05	25'	40'	32"	32'	50'	
25'	43'	FR04*-06	28'	47'	35"	38'	58'	
28'	49'	FR04*-07	32'	53'	39"	43'	67'	
32'	55'	FR04*-08	36'	60'	42"	48'	75'	

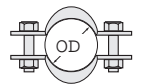


### KIT NUMBER EXPLANATION

Example: **FR**      **04\***      -      **03**  
 Type      Saddle size      Number Trolleys  
 (Round cable/hose)      (0.30" - 0.59" dia.)      -      (Three)

\* **Saddle sizes:** Models shown on chart above are for 0.3"-0/59" dia. cable only. For larger diameters, use "05" or "06" at end of number, as shown here.

- FR04 = 0.30" to 0.59" (7-15mm) OD cable/hose.
- FR05 = 0.60" to 0.94" (15-24mm) OD cable/hose.
- FR06 = 0.95" to 1.25" (24-32mm) OD cable/hose.



## Definitions

- AT** = Active Travel: Distance moving end must travel to do job.
- SL** = System Length: Anchor-point to anchor-point of wire rope.
- SD** = Storage Distance: Wire rope hardware and trolleys butted together.
- LD** = Loop Depth: Maximum height of loop formed by cable or hose.

## Kit Components

- 1 Wire Rope, length to suit SL
- 2 Hardware as required
- 3 Intermediate trolleys, by model
- 5 Tow Clamp/Clip (1)
- 6 Bumper Stop (2)
- 7 Tension Bracket, optional. Tow arm bracket, optional.

## STEEL TROLLEY

# FESTOON KITS—WIRE ROPE

The quickest way to select a Tag-Line festoon system is to use kits. For single cables/hoses, select the number of trolleys (middle two digits) for your travel...all the necessary parts come in the box. Add exact cable/hose for your job and it's finished.

### SELECTING A KIT:

**STEP 1** Determine Active Travel (AT) required and choose the appropriate kit from either the Flat Cable (WF) or Round Cable/hose (WR) table.

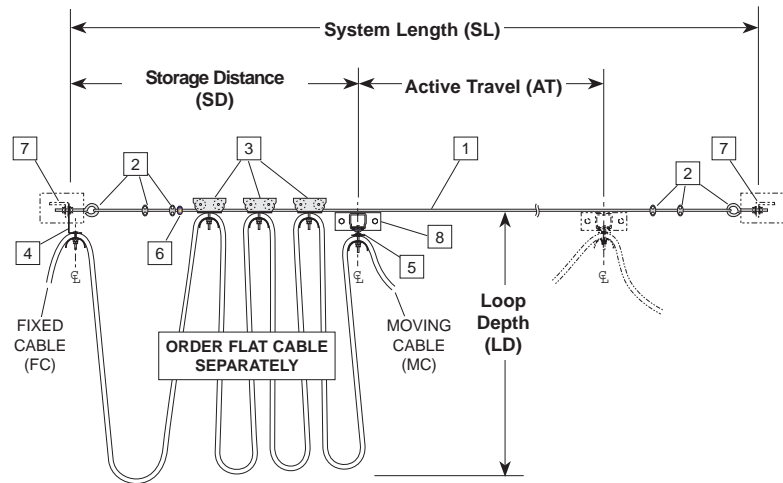
**STEP 2** Loop depth is assumed at 36" for all kits. Adjust to suit. Longer loop depth provides greater Active Travel...shorter loop depth provides less Active Travel. NOTE: Wire rope in kits is sufficient for System Length (SL) shown plus amount needed for securing at each end. If longer loop depth is to be used, order longer kit.

**STEP 3** Cable/hose NOT INCLUDED. Order separately length shown on table plus amount needed at each end for hook up to your system.



### FLAT CABLE KITS

KIT NUMBER	TRAVEL AT	CABLE/HOSE MIN.*	STORAGE LENGTH SD	SYSTEM LENGTH SL
WF-03-36	20'	24'	25"	23' 0"
WF-04-36	24'	29'	28"	27' 3"
WF-05-36	29'	35'	32"	32' 9"
WF-06-36	34'	41'	35"	38' 0"
WF-07-36	39'	47'	39"	43' 4"
WF-08-36	44'	52'	42"	48' 7"
WF-09-36	49'	58'	45"	53' 10"
WF-10-36	54'	60'	51"	59' 4"



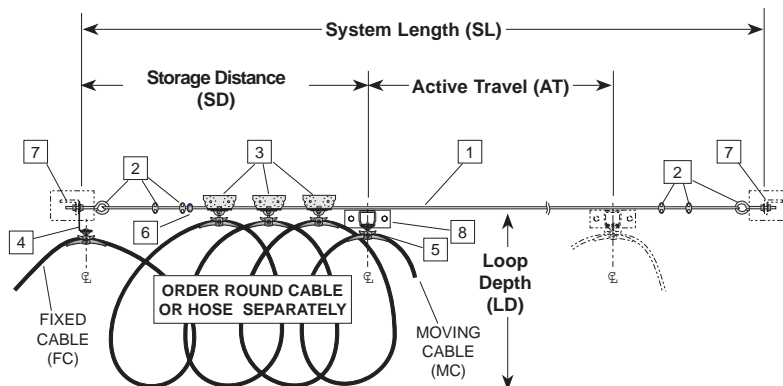
#### KIT NUMBER EXPLANATION

Example: **WF**      **03**      -      **36**  
 Type      Number Trolleys      Loop Depth  
 (Flat cable)      (Three)      -      (36")

\* Minimum length of cable/ hose listed in charts above is enough for travel only. Add length needed at each end for hook-up to your system.

### ROUND CABLE & HOSE KITS

KIT NUMBER	TRAVEL AT	CABLE/HOSE MIN.*	STORAGE LENGTH SD	SYSTEM LENGTH SL
WR-03-36	17'	26'	25"	20'0"
WR-04-36	22'	32'	28"	25'5"
WR-05-36	26'	38'	32"	29'9"
WR-06-36	31'	45'	35"	35'0"
WR-07-36	35'	51'	39"	39'4"
WR-08-36	39'	60'	42"	43'7"



#### KIT NUMBER EXPLANATION

Example: **WR**      **03**      -      **36**  
 Type      Number Trolleys      Loop Depth  
 (Round cable)      (Three)      -      (36")

\* Minimum length of cable/ hose listed in charts above is enough for travel only. Add length needed at each end for hook-up to your system.

\*\* WR trolleys have saddles to handle cable or hose up to 0.94" O.D. (3/8" I.D. hose).

### Definitions

- AT** = Active Travel: Distance moving end must travel to do job.
- SL** = System Length: Anchor-point to anchor-point of wire rope.
- SD** = Storage Distance: Wire rope hardware and trolleys butted together.
- LD** = Loop Depth: Maximum height of loop formed by cable or hose.

### Kit Components

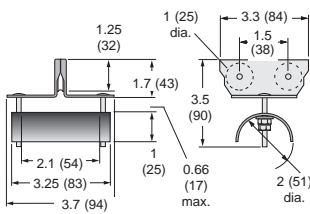
- 1 Wire Rope, length to suit SL
- 2 Hardware as required
- 3 Intermediate trolleys, by model
- 4 End Clamp (1)
- 5 Tow Clamp/Clip (1)
- 6 Bumper Stop (2)
- 7 Tension Bracket, optional.
- 8 Tow arm bracket, optional.



**ADD TO FESTOON KITS OR BUILD FROM SCRATCH.  
STEEL OR *Lock 'n Roll* TROLLEYS.**

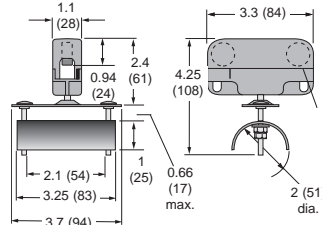
**COMPONENTS – Wire Rope Festoon**

**FLAT CABLE FESTOON COMPONENTS**



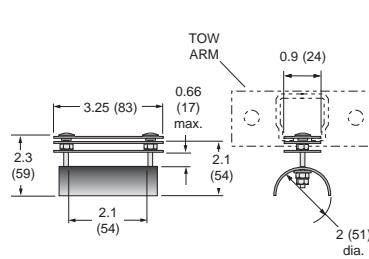
**STEEL TROLLEY  
#W25-FC-32**

Description: Zinc plated steel with dual nylon wheels.  
Zinc plated steel cable clamp.



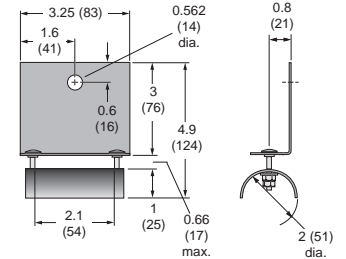
**Lock 'n Roll TROLLEY  
#FFT-08**

Description: Fiberglass reinforced molded nylon with zinc plated steel cable clamp.



**TOW CLAMP  
#W25-FT-02**

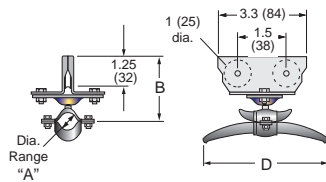
Description: Steel with zinc plating.



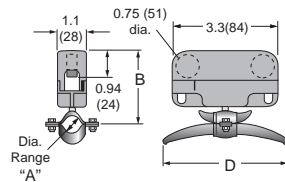
**END CLAMP  
#W25-FE-02**

Description: Steel with zinc plating.

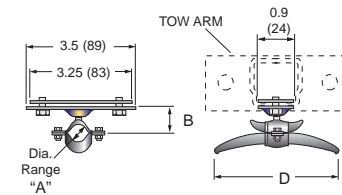
**ROUND CABLE & HOSE FESTOON COMPONENTS**



**STEEL TROLLEY**

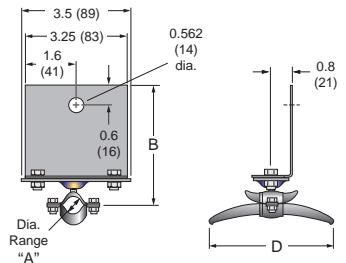


**Lock 'n Roll TROLLEY**



**TOW CLAMP**

Description: Steel with zinc plating.



**END CLAMP**

Description: Steel with zinc plating.

MODEL NUMBER	*CABLE O.D. "A" in. (mm)	"B" in. (mm)	"D" in. (mm)
W25-RC-11	0.31-0.59 (7-15)	2.75 (70)	2.75 (70)
W25-RC-12	0.60-0.94 (15-24)	2.94 (75)	3.86 (98)
W25-RC-13	0.95-1.25 (24-32)	3.2 (81)	5.0 (127)

Description: Zinc plated steel with dual nylon wheels.  
Zinc plated steel cable clamp.

MODEL NUMBER	*CABLE O.D. "A" in. (mm)	"B" in. (mm)	"D" in. (mm)
FRT-04	0.31-0.59 (7-15)	2.4 (61)	2.75 (70)
FRT-05	0.60-0.94 (15-24)	2.6 (66)	3.86 (98)
FRT-06	0.95-1.25 (24-32)	2.9 (74)	5.0 (127)

Description: Fiberglass reinforced molded nylon with zinc plated steel cable clamp.

MODEL NUMBER	*CABLE O.D. "A" in. (mm)	"B" in. (mm)	"D" in. (mm)
W25-RT-11	0.31-0.59 (7-15)	1.25 (32)	2.75 (70)
W25-RT-12	0.60-0.94 (15-24)	1.44 (37)	3.86 (98)
W25-RT-13	0.95-1.25 (24-32)	1.7 (4.3)	5.0 (127)

Description: Steel with zinc plating.

MODEL NUMBER	*CABLE O.D. "A" in. (mm)	"B" in. (mm)	"D" in. (mm)
W25-RE-11	0.31-0.59 (7-15)	4.06 (103)	2.75 (70)
W25-RE-12	0.60-0.94 (15-24)	4.25 (108)	3.86 (98)
W25-RE-13	0.95-1.25 (24-32)	4.5 (114)	5.0 (127)

Description: Steel with zinc plating.

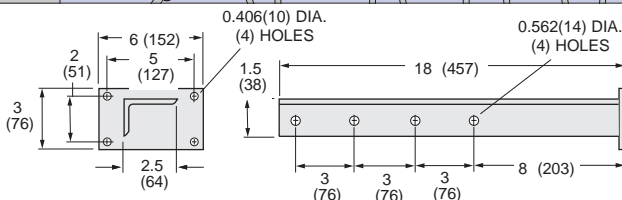
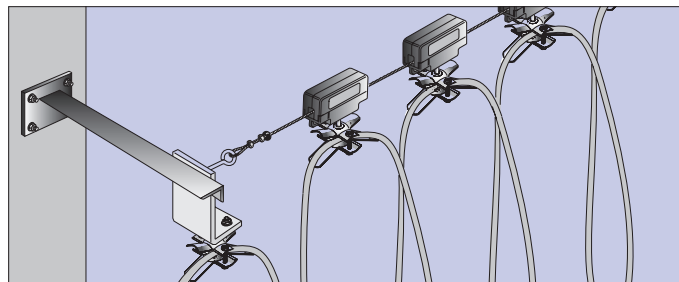
\* For type of hose or cable included in each O.D. range, refer to previous pages or "CABLE & HOSE DATA".

**OPTIONAL Components**

Flat Cable, Round Cable, Hose, Connectors...see "CABLE & HOSE DATA".

**Tension Bracket #W25-BR-01**

Anchor ends of wire rope and fixed end of festoon.



**Tow Arm #W25-TA-01**

Use on moving end of festoon with Tow Clamp (above).

