



Completely enclosed design to protect chain contents from steel and wood chips, dust, etc.

Covers “snap” open and closed, facilitating cable installation.

Optional nylon separators. Cables can be laid apart from each other.

Connecting pivot pin offers high integrity in high performance applications.

Tough nylon end brackets.

# *Protection Series* **Cable Carriers**

- Internal height range: 1.42–2.99 inches (36–76mm)

# PROTECTION SERIES

## SR660 & SR600

Links feature antifriction pivots. Covers removable from inner radius. Movable separators can be installed to create different compartments.

Carrier part number	Radius R*** in (mm)	Curve Length M*** in (mm)	O.A. Height H*** in (mm)	Outside Width A in (mm)	Outside Height B in (mm)	Inside Width C in (mm)	Inside Height D in (mm)	Weight lb/ft (kg/m)	Nylon Bracket F in (mm)
SR660050□□□*	3.94 (100)	16.34 (415)	10.04 (255)	3.11 (79)	2.17 (55)	1.97 (50)	1.42 (36)	1.28 (1.90)	2.44 (62)
	5.91 (150)	22.64 (575)	13.98 (355)	5.08 (129)	2.17 (55)	3.94 (100)	1.42 (36)	1.61 (2.40)	4.41 (112)
SR660100□□□*	7.87 (200)	28.74 (730)	17.91 (455)						
SR60015□□*	9.84 (250)	34.84 (885)	21.85 (555)	7.05 (179)	2.17 (55)	5.91 (150)	1.42 (36)	2.02 (3.00)	6.38 (162)

\* Complete model number by inserting value of radius (R) in mm: Example—SR660100 1 5 0

\*\* Complete the model number by inserting the value of the radius (R): Example—SR60015 1 where 0=100; 1=150; 2=200; 3=250

\*\*\* Refer to diagram below.

### Technical characteristics when self-supported

Speed	19.69 ft/s (6 m/s)
Acceleration	98.40 ft/s <sup>2</sup> (30 m/s <sup>2</sup> )
Pitch	1.97 in. (50 mm)

### Separator for SR660

Unassembled p/n S660	Assembled p/n S660MC
----------------------	----------------------

### Separator for SR600

Unassembled p/n S600	Assembled p/n S600MC
----------------------	----------------------

Pin SR660 PG660	Pin SR600 PG600
-----------------	-----------------

Pin Removal Tool p/n PZ010

### Mounting Brackets

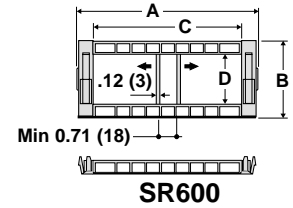
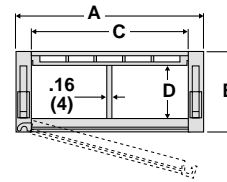
For SR660, C=50	For SR660, C=100	For SR600, C=150
-----------------	------------------	------------------

### Complete set, Assembled

AN660050KM	AN660100KM	AL600KM
------------	------------	---------

### Complete set, Unassembled

AN660050K	AN660100K	AL600K
-----------	-----------	--------

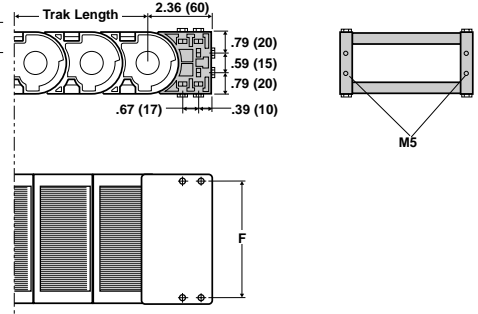


### SR660

### SR600

### Mounting Bracket details.

Sold in sets of two. Available in nylon only. Dimensions in inches (mm).



# PROTECTION SERIES

## SR770 & SR700

Larger than SR660 & SR600 above. Links feature antifriction pivots. Covers removable from inner radius. Movable separators can be installed to create different compartments.

Carrier part number	Radius R*** in (mm)	Curve Length M*** in (mm)	O.A. Height H*** in (mm)	Outside Width A in (mm)	Outside Height B in (mm)	Inside Width C in (mm)	Inside Height D in (mm)	Weight lb/ft (kg/m)	Nylon Bracket F in (mm)
SR770085□□□*	5.91 (150)	24.21 (615)	14.88 (378)	4.72 (120)	3.07 (78)	3.35 (85)	2.01 (51)	2.22 (3.30)	3.94 (100)
SR770100□□□*	7.87 (200)	30.31 (770)	18.82 (478)	5.31 (135)	3.07 (78)	3.94 (100)	2.01 (51)	2.62 (3.90)	4.53 (115)
SR770150□□□*	9.84 (250)	36.61 (930)	22.76 (578)	7.28 (185)	3.07 (78)	5.91 (150)	2.01 (51)	2.76 (4.10)	6.50 (165)
SR770200□□□*	11.81 (300)	42.72 (1085)	26.69 (678)	9.25 (235)	3.07 (78)	7.87 (200)	2.01 (51)	3.02 (4.50)	8.46 (215)
SR70025□□*				11.22 (285)	3.07 (78)	9.84 (250)	2.01 (51)	3.36 (5.00)	10.43 (265)

\* Complete model number by inserting value of radius (R) in mm: Example—SR770200 2 5 0

\*\* Complete the model number by inserting the value of the radius (R): Example—SR70025 1 where 0=150; 1=200; 2=250; 3=300

\*\*\* Refer to diagram below.

### Technical characteristics when self-supported

Speed	19.69 ft/s (6 m/s)
Acceleration	98.40 ft/s <sup>2</sup> (30 m/s <sup>2</sup> )
Pitch	2.76 in. (70 mm)

### Separator for SR770

Unassembled p/n S770	Assembled p/n S770MC
----------------------	----------------------

### Separator for SR700

Unassembled p/n S700	Assembled p/n S700MC
----------------------	----------------------

Pin SR770 PG770	Pin SR700 PG700
-----------------	-----------------

Pin Removal Tool p/n PZ010

### Mounting Brackets

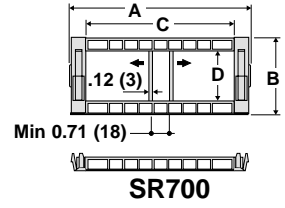
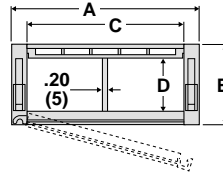
For SR770	For SR700, C=250
-----------	------------------

### Complete set, Assembled

AN770□□□□KM	AL700KM
-------------	---------

### Complete set, Unassembled

AN770□□□□K	AL700K
------------	--------

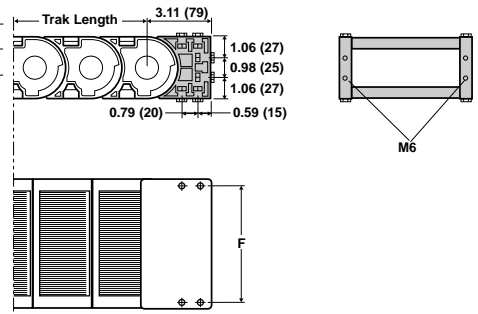


### SR770

### SR700

### Mounting Bracket details.

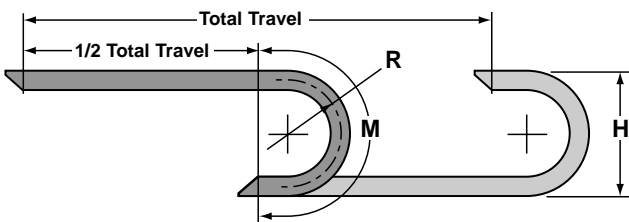
Sold in sets of two. Available in nylon only. Dimensions in inches (mm).



① Complete the model number by inserting the value of the width in mm (C): Example—AN770150KM

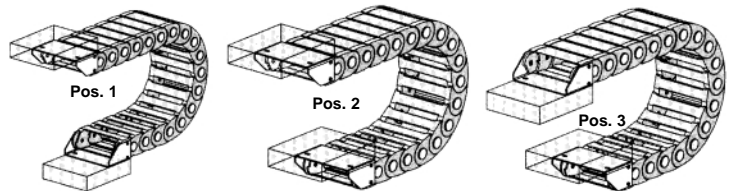
### Chain Length Diagram (applies to all models)

Chain length required equals 1/2 total travel plus length of curve (M)



### Ways of Mounting End Brackets

Use this diagram if mounting bracket position must be included in model number.



# PROTECTION SERIES

## SR445PE & SR445PI

Links feature antifriction pivots. Covers removable from OUTER radius (SR445PE), or from INNER radius (SR445PI). Movable separators can be installed to create different compartments.

Carrier part number	Radius R** in (mm)	Curve Length M** in (mm)	O.A. Height H** in (mm)	Outside Width A in (mm)	Outside Height B in (mm)	Inside Width C in (mm)	Inside Height D in (mm)	Weight lb/ft (kg/m)	Nylon Bracket F in (mm)	Steel Bracket F in (mm)
SR445PE(PI)050□□□*				2.83 (72)	2.52 (64)	1.97 (50)	1.77 (45)	1.23 (1.83)	2.48 (63)	1.10 (28)
SR445PE(PI)061□□□*				3.27 (83)	2.52 (64)	2.40 (61)	1.77 (45)	1.25 (1.87)	2.91 (74)	1.54 (39)
SR445PE(PI)075□□□*				3.82 (97)	2.52 (64)	2.95 (75)	1.77 (45)	1.37 (2.05)	3.46 (88)	2.09 (53)
SR445PE(PI)081□□□*				4.06 (103)	2.52 (64)	3.19 (81)	1.77 (45)	1.41 (2.10)	3.70 (94)	2.32 (59)
SR445PE(PI)095□□□*	3.94 (100)	17.72 (450)	10.39 (264)	4.61 (117)	2.52 (64)	3.74 (95)	1.77 (45)	1.49 (2.23)	4.25 (108)	2.87 (73)
SR445PE(PI)100□□□*				4.80 (122)	2.52 (64)	3.94 (100)	1.77 (45)	1.51 (2.26)	4.45 (113)	3.07 (78)
SR445PE(PI)107□□□*				5.08 (129)	2.52 (64)	4.21 (107)	1.77 (45)	1.55 (2.31)	4.72 (120)	3.35 (85)
SR445PE(PI)117□□□*	4.92 (125)	20.87 (530)	12.36 (314)	5.47 (139)	2.52 (64)	4.61 (117)	1.77 (45)	1.59 (2.38)	5.12 (130)	3.74 (95)
SR445PE(PI)125□□□*				5.79 (147)	2.52 (64)	4.92 (125)	1.77 (45)	1.67 (2.49)	5.43 (138)	4.06 (103)
SR445PE(PI)136□□□*	5.91 (150)	23.82 (605)	14.33 (364)	6.22 (158)	2.52 (64)	5.35 (136)	1.77 (45)	1.74 (2.60)	5.87 (149)	4.49 (114)
SR445PE(PI)150□□□*				6.77 (172)	2.52 (64)	5.91 (150)	1.77 (45)	1.82 (2.71)	6.42 (163)	5.04 (128)
SR445PE(PI)175□□□*	7.87 (200)	30.12 (765)	18.27 (464)	7.76 (197)	2.52 (64)	6.89 (175)	1.77 (45)	1.96 (2.93)	7.40 (188)	6.02 (153)
SR445PE(PI)200□□□*				8.74 (222)	2.52 (64)	7.87 (200)	1.77 (45)	2.12 (3.17)	8.39 (213)	7.01 (178)
SR445PE(PI)211□□□*	9.84 (250)	36.22 (920)	22.20 (564)	9.17 (233)	2.52 (64)	8.31 (211)	1.77 (45)	2.18 (3.26)	8.82 (224)	7.44 (189)
SR445PE(PI)225□□□*				9.72 (247)	2.52 (64)	8.86 (225)	1.77 (45)	2.27 (3.39)	9.37 (238)	7.99 (203)
SR445PE(PI)252□□□*	11.81(300)	42.52(1080)	26.14 (664)	10.79(274)	2.52 (64)	9.92 (252)	1.77 (45)	2.44 (3.64)	10.43(265)	9.06 (230)
SR445PE(PI)261□□□*				11.14(283)	2.52 (64)	10.28(261)	1.77 (45)	2.49 (3.71)	10.79(274)	9.41 (239)
SR445PE(PI)312□□□*				13.15(334)	2.52 (64)	12.28(312)	1.77 (45)	2.77 (4.13)	12.80(325)	11.42(290)
SR445PE(PI)334□□□*				14.02(356)	2.52 (64)	13.15(334)	1.77 (45)	2.91 (4.35)	13.66(347)	12.28(312)
SR445PE(PI)362□□□*				15.12(384)	2.52 (64)	14.25(362)	1.77 (45)	3.08 (4.59)	14.76(375)	13.39(340)

\* Complete model number by inserting value of radius (R) in mm: Example—SR445PE050 **2** **5** **0**  
 \*\* Refer to diagram on page 2.

Technical characteristics when self-supported	
Speed	32.81 ft/s (10 m/s)
Acceleration	164.08 ft/s <sup>2</sup> (50 m/s <sup>2</sup> )
Pitch	2.64 in. (67 mm)

Separator	
Unassembled p/n	S445C
Assembled p/n	S445CMC

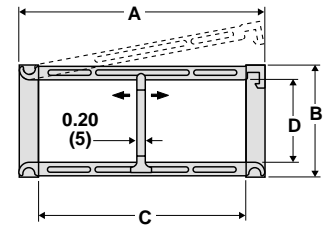
Pin part no. PG445

### Mounting Brackets

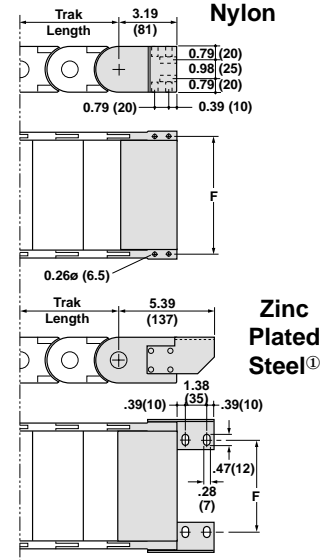
Complete set, Assembled	Nylon p/n AN445P□□□@KM	Zinc Plated Steel <sup>①</sup> p/n A445P□□□@KM□ <sup>③</sup>
Complete set, Unassembled	Nylon p/n AN445P□□□@K	Zinc Plated Steel <sup>①</sup> p/n A445P□□□@K□ <sup>③</sup>

Pin Removal Tool p/n PZ010

- ① Also available in stainless steel.
- ② Complete the model number by inserting the value of the inside width in mm (C): Example—AN445P117KM
- ③ Indicate mounting position variation. See drawings on page 2.



**Mounting Bracket details.**  
 Sold in sets of two.  
 Dimensions in inches (mm).



# PROTECTION SERIES

## SR475PE & SR475PI

Snap fit bars removable from outer radius (SR475PE) or inner radius (SR475PI). Movable separators can be installed to create different compartments.

Carrier part number	Radius R** in (mm)	Curve Length M** in (mm)	O.A. Height H** in (mm)	Outside Width A in (mm)	Outside Height B in (mm)	Inside Width C in (mm)	Inside Height D in (mm)	Weight lb/ft (kg/m)	Steel Bracket F in (mm)
SR475PE(PI)074□□□*				4.06 (112)	3.98 (101)	2.91 (74)	2.99 (76)	3.08 (4.60)	1.38 (35)
SR475PE(PI)094□□□*	7.09 (180)	30.51 (775)	18.15 (461)	4.80 (132)	3.98 (101)	3.70 (94)	2.99 (76)	3.22 (4.80)	2.17 (55)
SR475PE(PI)119□□□*	7.87 (200)	33.07 (840)	19.72 (501)	5.08 (157)	3.98 (101)	4.69 (119)	2.99 (76)	3.42 (5.10)	3.15 (80)
SR475PE(PI)126□□□*				5.47 (164)	3.98 (101)	4.96 (126)	2.99 (76)	3.45 (5.15)	3.43 (87)
SR475PE(PI)149□□□*	9.84 (250)	39.17 (995)	23.66 (601)	5.79 (187)	3.98 (101)	5.87 (149)	2.99 (76)	3.62 (5.40)	4.33 (110)
SR475PE(PI)189□□□*				6.22 (227)	3.98 (101)	7.44 (189)	2.99 (76)	3.89 (5.80)	5.91 (150)
SR475PE(PI)224□□□*	11.81(300)	45.47(1155)	27.60 (701)	7.76 (262)	3.98 (101)	8.82 (224)	2.99 (76)	4.22 (6.20)	7.28 (185)
SR475PE(PI)274□□□*	13.78(350)	51.57(1310)	31.54 (801)	9.17 (312)	3.98 (101)	10.79(274)	2.99 (76)	4.52 (6.75)	9.25 (235)
SR475PE(PI)324□□□*	15.75(400)	57.87(1470)	35.47 (901)	9.72 (362)	3.98 (101)	12.76(324)	2.99 (76)	4.89 (7.30)	11.22(285)
SR475PE(PI)374□□□*				10.79 (412)	3.98 (101)	14.72(374)	2.99 (76)	5.26 (7.85)	13.19(335)

\* Complete model number by inserting value of radius (R) in mm: Example—SR475PE224 **2** **5** **0**  
 \*\* Refer to diagram on page 2.

Technical characteristics when self-supported	
Speed	26.25 ft/s (8 m/s)
Acceleration	131.24 ft/s <sup>2</sup> (40 m/s <sup>2</sup> )
Pitch	4.13 in. (105 mm)

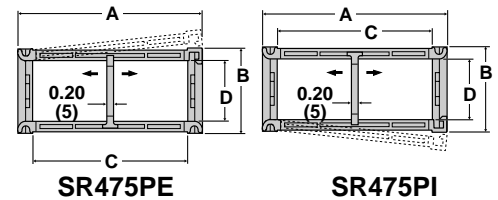
Separator	
Unassembled p/n	S309S
Assembled p/n	S309SMC

Pin Part no. PG475

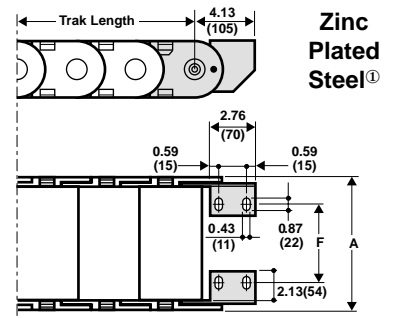
### Mounting Brackets

Complete set, assembled	Zinc Plated Steel <sup>①</sup> p/n A475P□□□KM□ <sup>③</sup>
Complete set, unassembled	Zinc Plated Steel <sup>①</sup> p/n A475P□□□K□ <sup>③</sup>

- ① Also available in stainless steel.
- ② Indicate mounting position variation. See drawings on page 2.



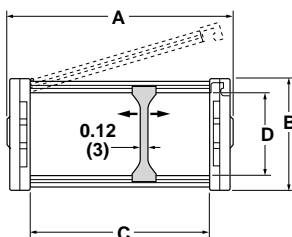
**Mounting Bracket details.**  
 Sold in sets of two.  
 Dimensions in inches (mm).



# PROTECTION SERIES

## SR435PE & SR435PI

Links feature large antifriction pivots. Covers removable from OUTER radius (SR435PE), or from INNER radius (SR435PI). Movable separators can be installed to create different compartments.



Carrier part number	Radius R** in (mm)	Curve Length M** in (mm)	O.A. Height H** in (mm)	Outside Width A in (mm)	Outside Height B in (mm)	Inside Width C in (mm)	Inside Height D in (mm)	Weight lb/ft (kg/m)	Nylon Bracket F in (mm)	Steel Bracket F in (mm)
SR435PE(PI)040□□□*				2.36 (60)	1.93 (49)	1.57 (40)	1.38 (35)	0.84 (1.25)	2.05 (52)	1.10 (28)
SR435PE(PI)050□□□*	2.95 (075)	13.39 (340)	7.83 (199)	2.76 (70)	1.93 (49)	1.97 (50)	1.38 (35)	0.94 (1.40)	2.44 (62)	1.50 (38)
SR435PE(PI)060□□□*	3.94 (100)	16.34 (415)	9.80 (249)	3.15 (80)	1.93 (49)	2.36 (60)	1.38 (35)	0.97 (1.45)	2.83 (72)	1.89 (48)
SR435PE(PI)076□□□*	4.92 (125)	19.49 (495)	11.77 (299)	3.78 (96)	1.93 (49)	2.99 (76)	1.38 (35)	1.08 (1.60)	3.50 (89)	2.52 (64)
SR435PE(PI)103□□□*	5.91 (150)	22.64 (575)	13.74 (349)	4.84 (123)	1.93 (49)	4.06 (103)	1.38 (35)	1.28 (1.90)	4.57(116)	3.58 (91)
SR435PE(PI)125□□□*	7.87 (200)	28.40 (730)	17.68 (449)	5.71 (145)	1.93 (49)	4.92 (125)	1.38 (35)	1.41 (2.10)	5.43(138)	4.45(113)
SR435PE(PI)150□□□*				6.69 (170)	1.93 (49)	5.91 (150)	1.38 (35)	1.58 (2.35)	6.46(164)	5.43(138)

\* Complete model number by inserting value of radius (R) in mm: Example—SR435PE200 **1** **5** **0**

\*\* Refer to diagram on page 2.

### Technical characteristics when self-supported

Speed	32.81 ft/s (10 m/s)
Acceleration	164.08 ft/s <sup>2</sup> (50 m/s <sup>2</sup> )
Pitch	1.97 in. (50 mm)

### Separator

Unassembled p/n S4353
Assembled p/n S4353MC

### Pin

part no. PG4353
-----------------

### Pin Removal Tool

p/n PZ010
-----------

### Mounting Brackets

Complete set, Assembled	Nylon p/n AN435P□□□□@KM	Zinc Plated Steel① p/n A435P□□□□@KM□③
Complete set, Unassembled	Nylon p/n AN435P□□□□@K	Zinc Plated Steel① p/n A435P□□□□@K□③

### Tiewrap Clamp

Assembled p/n SFC435M□□□□@KM
Unassembled p/n SFC435M□□□□@K

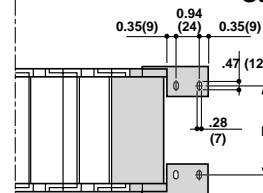
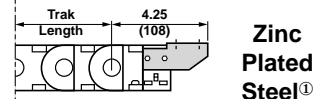
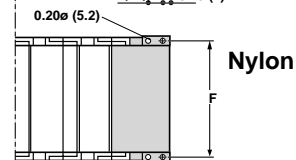
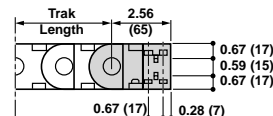
① Also available in stainless steel.

② Complete the model number by inserting the value of the inside width in mm (C): Example—AN435P103KM

③ Indicate mounting position variation. See drawings on page 2.

### Mounting Bracket details.

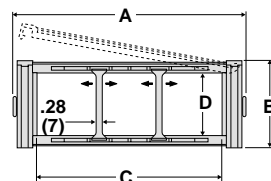
Sold in sets of two.  
Dimensions in inches (mm).



# PROTECTION SERIES

## SR309C

Links feature male/female joining system with triple nylon pin which guarantees high resistance to additional load and torsion strength. Nylon covers, hinged to chain links, can be opened from outer radius. Movable separators can be installed to create different compartments.



Carrier part number	Radius R** in (mm)	Curve Length M** in (mm)	O.A. Height H** in (mm)	Outside Width A in (mm)	Outside Height B in (mm)	Inside Width C in (mm)	Inside Height D in (mm)	Weight lb/ft (kg/m)	Nylon Bracket F in (mm)
SR309C200□□□*	7.87 (200)	32.68 (830)	19.69 (500)	10.08 (256)	3.94 (100)	7.87 (200)	2.83 (72)	3.83 (5.70)	9.02 (229)
	9.84 (250)	38.78 (985)	23.62 (600)						
	11.81(300)	45.08(1145)	27.56 (700)	4.02 (356)	3.94 (100)	11.81 (300)	2.83 (72)	4.57 (6.80)	12.95 (329)
SR309C300□□□*	13.78(350)	51.18(1300)	31.50 (800)						
	15.75(400)	57.48(1460)	35.43 (900)						
SR309C400□□□*	19.69(500)	69.69(1770)	43.31(1100)	17.95 (456)	3.94 (100)	15.75 (400)	2.83 (72)	5.31 (7.90)	16.89 (429)

\* Complete model number by inserting value of radius (R) in mm: Example—SR309C300 **3** **5** **0**

\*\* Refer to diagram on page 2.

### Technical characteristics when self-supported

Speed	26.25 ft/s (8 m/s)
Acceleration	131.24 ft/s <sup>2</sup> (40 m/s <sup>2</sup> )
Pitch	3.94 in. (100 mm)

### Separator

Unassembled p/n S309PO
Assembled p/n S309POMC

### Pin

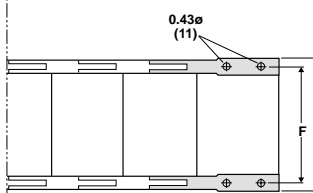
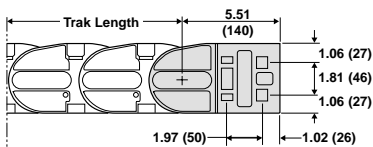
part no. PG309
----------------

### Nylon Mounting Brackets

Complete set, Assembled	Complete set, Unassembled
C=200 AN309C200KM	AN309C200K
C=300 AN309C300KM	AN309C300K
C=400 AN309C400KM	AN309C400K

### Mounting Bracket details.

Sold in sets of two.  
Available in nylon only.  
Dimensions in inches (mm).



## Gleason Reel Corp.

600 South Clark Street  
P.O. Box 26  
Mayville, WI 53050  
Phone: 920-387-4120 Fax: 920-387-4189  
www.hubbell-gleason.com