

Heavy Series **Cable Carriers**

First developed in the late 1970s for heavy duty machine tool applications.

Strongest compact design nylon carrier in the industry.

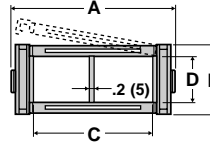
Features proven male/female links and exceptionally strong 3-pin pivot.

- *Internal height range: 1.46-2.99 inches (37-76 mm)*
- *Self-supporting maximum length: 15.75 ft. (4.8 m)*

HEAVY SERIES

SR306SI/SR306SE

SR306SI: Nylon snap fit bars removable from inner radius.
SR306SE: Nylon snap fit bars removable from outer radius.
 Standard carriers equipped with bars mounted on every second link. Also available on every link.^③



Carrier ^② part number	Radius R ^④ in (mm)	Curve Length M ^④ in (mm)	O.A. Height H ^④ in (mm)	Outside Width A in (mm)	Outside Height B in (mm)	Inside Width C in (mm)	Inside Height D in (mm)	Weight lb/ft (kg/m)	Nylon Bracket F in (mm)	Steel Bracket F in (mm)
SR306SI(SE)043□□□④				3.11 (79)	2.17 (55)	1.69 (43)	1.46 (37)	1.08 (1.61)	2.40 (61)	1.42 (36)
SR306SI(SE)054□□□④				3.54 (90)	2.17 (55)	2.13 (54)	1.46 (37)	1.08 (1.61)	2.83 (72)	1.85 (47)
SR306SI(SE)068□□□④				4.09 (104)	2.17 (55)	2.68 (68)	1.46 (37)	1.13 (1.68)	3.39 (86)	2.40 (61)
SR306SI(SE)074□□□④				4.33 (110)	2.17 (55)	2.91 (74)	1.46 (37)	1.14 (1.70)	3.62 (92)	2.64 (67)
SR306SI(SE)088□□□④	2.95 (075)	14.57 (370)	8.07 (205)	4.88 (124)	2.17 (55)	3.46 (88)	1.46 (37)	1.17 (1.74)	4.17 (106)	3.19 (81)
SR306SI(SE)093□□□④				5.08 (129)	2.17 (55)	3.66 (93)	1.46 (37)	1.17 (1.74)	4.37 (111)	3.39 (86)
SR306SI(SE)100□□□④	4.21 (107)	18.50 (470)	10.59 (269)	5.35 (136)	2.17 (55)	3.94 (100)	1.46 (37)	1.18 (1.76)	4.65 (118)	3.66 (93)
SR306SI(SE)110□□□④				5.75 (146)	2.17 (55)	4.33 (110)	1.46 (37)	1.19 (1.77)	5.04 (128)	4.06 (103)
SR306SI(SE)118□□□④	5.91 (150)	23.82 (605)	13.98 (355)	6.06 (154)	2.17 (55)	4.65 (118)	1.46 (37)	1.22 (1.82)	5.35 (136)	4.37 (111)
SR306SI(SE)129□□□④				6.50 (165)	2.17 (55)	5.08 (129)	1.46 (37)	1.24 (1.85)	5.79 (147)	4.80 (122)
SR306SI(SE)143□□□④	7.87 (200)	29.92 (760)	17.91 (455)	7.05 (179)	2.17 (55)	5.63 (143)	1.46 (37)	1.27 (1.89)	6.34 (161)	5.35 (136)
SR306SI(SE)168□□□④				8.03 (204)	2.17 (55)	6.61 (168)	1.46 (37)	1.32 (1.96)	7.32 (186)	6.34 (161)
SR306SI(SE)193□□□④	9.84 (250)	36.22 (920)	21.85 (555)	9.02 (229)	2.17 (55)	7.60 (193)	1.46 (37)	1.37 (2.04)	8.31 (211)	7.32 (186)
SR306SI(SE)204□□□④				9.45 (240)	2.17 (55)	8.03 (204)	1.46 (37)	1.39 (2.07)	8.74 (222)	7.76 (197)
SR306SI(SE)218□□□④	11.81 (300)	42.32(1075)	25.79 (655)	10.00 (254)	2.17 (55)	8.58 (218)	1.46 (37)	1.42 (2.11)	9.29 (236)	8.31 (211)
SR306SI(SE)245□□□④				11.06 (281)	2.17 (55)	9.65 (245)	1.46 (37)	1.47 (2.19)	10.35 (263)	9.37 (238)
SR306SI(SE)254□□□④				11.42 (290)	2.17 (55)	10.00 (254)	1.46 (37)	1.49 (2.22)	10.71 (272)	9.72 (247)
SR306SI(SE)305□□□④				13.43 (341)	2.17 (55)	12.01 (305)	1.46 (37)	1.57 (2.34)	12.72 (323)	11.73 (298)
SR306SI(SE)327□□□④				14.26 (363)	2.17 (55)	12.87 (327)	1.46 (37)	1.62 (2.41)	13.58 (345)	12.60 (320)
SR306SI(SE)355□□□④				15.39 (391)	2.17 (55)	13.98 (355)	1.46 (37)	1.67 (2.49)	14.68 (373)	13.70 (348)

Technical characteristics when self-supported
 Speed 26.25 ft/s (8 m/s)
 Acceleration 131.23 ft/s² (40 m/s²)
 Pitch 2.56 in. (65 mm)

Separator
 Unassembled p/n S660A
 Assembled p/n S660AMC

Fastening Separator
 Unassembled p/n S660AH
 Assembled p/n S660AHMC

Pin
 Part no.
 PG307

End Brackets

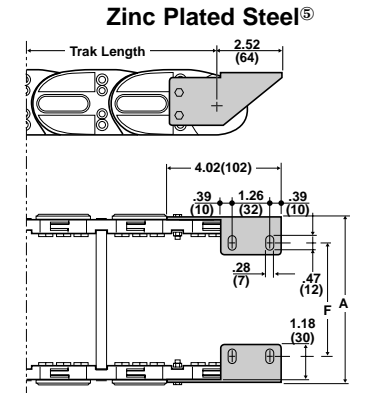
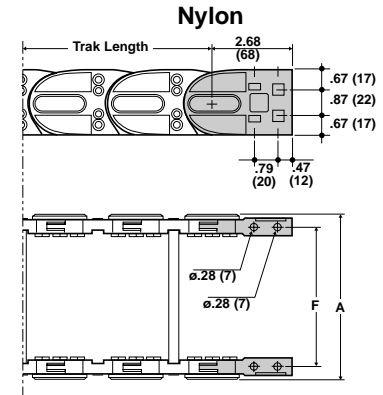
Complete set, assembled
 Complete set, unassembled

Nylon p/n AN306KM
 Nylon p/n AN306K

Zinc Plated Steel^⑤ p/n A306SKM□^⑥
 Zinc Plated Steel^⑤ p/n A306SK□^⑥

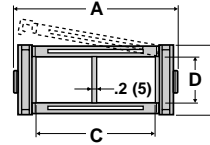
Pin Removal Tool
 p/n PZ036

Mounting Bracket details.
 Sold in sets of two.
 Dimensions in inches (mm).



SR307SI/SR307SE

SR307SI: Nylon snap fit bars removable from inner radius.
SR307SE: Nylon snap fit bars removable from outer radius.
 Standard carriers equipped with bars mounted on every second link. Also available on every link.^③



Carrier ^② part number	Radius R ^④ in (mm)	Curve Length M ^④ in (mm)	O.A. Height H ^④ in (mm)	Outside Width A in (mm)	Outside Height B in (mm)	Inside Width C in (mm)	Inside Height D in (mm)	Weight lb/ft (kg/m)	Nylon Bracket F in (mm)	Steel Bracket F in (mm)
SR307SI(SE)042□□□④				3.15 (80)	2.52 (64)	1.65 (42)	1.85 (47)	1.25 (1.86)	2.40 (61)	1.22 (31)
SR307SI(SE)053□□□④				3.58 (91)	2.52 (64)	2.09 (53)	1.85 (47)	1.25 (1.86)	2.83 (72)	1.65 (42)
SR307SI(SE)067□□□④				4.13 (105)	2.52 (64)	2.64 (67)	1.85 (47)	1.29 (1.92)	3.39 (86)	2.20 (56)
SR307SI(SE)073□□□④				4.37 (111)	2.52 (64)	2.87 (73)	1.85 (47)	1.30 (1.94)	3.62 (92)	2.44 (62)
SR307SI(SE)087□□□④	2.95 (075)	14.76 (375)	8.43 (214)	4.92 (125)	2.52 (64)	3.43 (87)	1.85 (47)	1.32 (1.97)	4.17 (106)	2.99 (76)
SR307SI(SE)092□□□④				5.12 (130)	2.52 (64)	3.62 (92)	1.85 (47)	1.32 (1.97)	4.37 (111)	3.19 (81)
SR307SI(SE)099□□□④	3.54 (090)	16.73 (425)	9.61 (244)	5.39 (137)	2.52 (64)	3.90 (99)	1.85 (47)	1.34 (1.99)	4.65 (118)	3.46 (88)
SR307SI(SE)109□□□④				5.79 (147)	2.52 (64)	4.29 (109)	1.85 (47)	1.34 (2.00)	5.04 (128)	3.86 (98)
SR307SI(SE)117□□□④	4.72 (120)	20.74 (520)	11.97 (304)	6.10 (155)	2.52 (64)	4.61 (117)	1.85 (47)	1.38 (2.05)	5.35 (136)	4.17 (106)
SR307SI(SE)128□□□④				6.54 (166)	2.52 (64)	5.04 (128)	1.85 (47)	1.39 (2.07)	5.79 (147)	4.61 (117)
SR307SI(SE)142□□□④	5.51 (140)	22.83 (580)	13.54 (344)	7.09 (180)	2.52 (64)	5.59 (142)	1.85 (47)	1.41 (2.10)	6.34 (161)	5.16 (131)
SR307SI(SE)167□□□④				8.07 (205)	2.52 (64)	6.57 (167)	1.85 (47)	1.45 (2.16)	7.32 (186)	6.14 (156)
SR307SI(SE)192□□□④	7.87 (200)	30.31 (770)	18.27 (464)	9.06 (230)	2.52 (64)	7.56 (192)	1.85 (47)	1.50 (2.23)	8.31 (211)	7.13 (181)
SR307SI(SE)203□□□④				9.49 (241)	2.52 (64)	7.99 (203)	1.85 (47)	1.52 (2.26)	8.74 (222)	7.56 (192)
SR307SI(SE)217□□□④	9.84 (250)	36.42 (925)	22.20 (564)	10.04 (255)	2.52 (64)	8.54 (217)	1.85 (47)	1.55 (2.30)	9.29 (236)	8.11 (206)
SR307SI(SE)244□□□④				11.10 (282)	2.52 (64)	9.61 (244)	1.85 (47)	1.59 (2.37)	10.35 (263)	9.17 (233)
SR307SI(SE)253□□□④				11.46 (291)	2.52 (64)	9.96 (253)	1.85 (47)	1.61 (2.39)	10.72 (272)	9.53 (242)
SR307SI(SE)304□□□④				13.46 (342)	2.52 (64)	11.97 (304)	1.85 (47)	1.68 (2.50)	12.72 (323)	11.54 (293)
SR307SI(SE)326□□□④				14.33 (364)	2.52 (64)	12.83 (326)	1.85 (47)	1.72 (2.56)	13.58 (345)	12.40 (315)
SR307SI(SE)354□□□④				15.43 (392)	2.52 (64)	13.94 (354)	1.85 (47)	1.77 (2.63)	14.69 (373)	13.75 (343)

Technical characteristics when self-supported
 Speed 26.25 ft/s (8 m/s)
 Acceleration 131.23 ft/s² (40 m/s²)
 Pitch 2.76 in. (70 mm)

Separator
 Unassembled p/n S307S
 Assembled p/n S307SMC

Fastening Separator
 Unassembled p/n S307SH
 Assembled p/n S307SHMC

Pin
 Part no.
 PG307

End Brackets

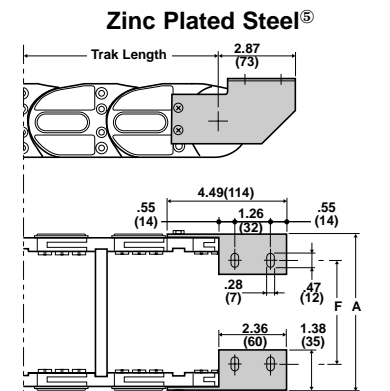
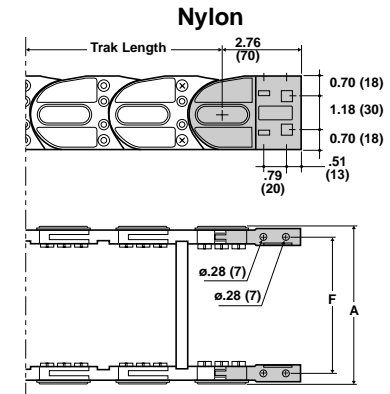
Complete set, assembled
 Complete set, unassembled

Nylon p/n AN307KM
 Nylon p/n AN307K

Zinc Plated Steel^⑤ p/n A307SKM□^⑥
 Zinc Plated Steel^⑤ p/n A307SK□^⑥

Pin Removal Tool
 p/n PZ036

Mounting Bracket Details.
 Sold in sets of two.
 Dimensions in inches (mm).



① Complete model number by inserting value of radius (R) in mm: Example—SR307SI092 1 4 0

② Model number for carrier with snap fit bars opening from inner radius. To order with opening to outer radius, replace I in model number with E: Example—SR307SE092140.

③ Standard carrier equipped with nylon bar every second link. To order nylon bar at every link, add letter D at end of number: Example—SR307SE092140D.

④ Refer to diagram on back page.

⑤ Also available in stainless steel.

⑥ Indicate mounting position variation. See drawings on back page.

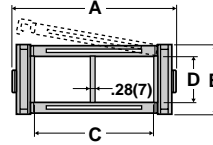
HEAVY SERIES

SR308SI/SR308SE

SR308SI: Nylon snap fit bars removable from inner radius.

SR308SE: Nylon snap fit bars removable from outer radius.

Standard carriers equipped with bars mounted on every second link. Also available on every link.③



Carrier② part number	Radius R④ in (mm)	Curve Length M④ in (mm)	O.A. Height H④ in (mm)	Outside Width A in (mm)	Outside Height B in (mm)	Inside Width C in (mm)	Inside Height D in (mm)	Weight lb/ft (kg/m)	Nylon Bracket F in (mm)	Steel Bracket F in (mm)
SR308SI(SE)038□□□①				3.23 (82)	2.95 (75)	1.50 (38)	2.24 (57)	1.65 (2.46)	2.44 (62)	0.79 (20)
SR308SI(SE)049□□□①				3.66 (93)	2.95 (75)	1.93 (49)	2.24 (57)	1.65 (2.46)	2.87 (73)	1.22 (31)
SR308SI(SE)063□□□①				4.21 (107)	2.95 (75)	2.48 (63)	2.24 (57)	1.69 (2.51)	3.43 (87)	1.77 (45)
SR308SI(SE)069□□□①				4.45 (113)	2.95 (75)	2.72 (69)	2.24 (57)	1.70 (2.53)	3.66 (93)	2.01 (51)
SR308SI(SE)083□□□①	5.91 (150)	25.00 (635)	14.76 (375)	5.00 (127)	2.95 (75)	3.27 (83)	2.24 (57)	1.72 (2.56)	4.21 (107)	2.56 (65)
SR308SI(SE)088□□□①				5.20 (132)	2.95 (75)	3.46 (88)	2.24 (57)	1.72 (2.56)	4.41 (112)	2.76 (70)
SR308SI(SE)095□□□①	7.09 (180)	28.54 (725)	17.13 (435)	5.47 (139)	2.95 (75)	3.74 (95)	2.24 (57)	1.73 (2.58)	4.69 (119)	3.03 (77)
SR308SI(SE)105□□□①				5.87 (149)	2.95 (75)	4.13 (105)	2.24 (57)	1.74 (2.59)	5.08 (129)	3.43 (87)
SR308SI(SE)113□□□①	7.87 (200)	31.10 (790)	18.70 (475)	6.18 (157)	2.95 (75)	4.45 (113)	2.24 (57)	1.76 (2.62)	5.39 (137)	3.74 (95)
SR308SI(SE)124□□□①				6.61 (168)	2.95 (75)	4.88 (124)	2.24 (57)	1.78 (2.65)	5.83 (148)	4.17 (106)
SR308SI(SE)138□□□①	9.06 (230)	34.84 (885)	21.06 (535)	7.17 (182)	2.95 (75)	5.43 (138)	2.24 (57)	1.79 (2.67)	6.38 (162)	4.72 (120)
SR308SI(SE)163□□□①				8.15 (207)	2.95 (75)	6.42 (163)	2.24 (57)	1.83 (2.73)	7.36 (187)	5.71 (145)
SR308SI(SE)188□□□①	11.02(280)	40.94(1040)	25.00 (635)	9.13 (232)	2.95 (75)	7.40 (188)	2.24 (57)	1.88 (2.79)	8.35 (212)	6.69 (170)
SR308SI(SE)199□□□①				9.57 (243)	2.95 (75)	7.83 (199)	2.24 (57)	1.89 (2.81)	8.78 (223)	7.13 (181)
SR308SI(SE)213□□□①	15.75(400)	55.91(1420)	34.45 (875)	10.12 (257)	2.95 (75)	8.39 (213)	2.24 (57)	1.91 (2.84)	9.33 (237)	7.68 (195)
SR308SI(SE)240□□□①				11.18 (284)	2.95 (75)	9.45 (240)	2.24 (57)	1.95 (2.90)	10.39(264)	8.74 (222)
SR308SI(SE)249□□□①				11.54 (293)	2.95 (75)	9.80 (249)	2.24 (57)	1.96 (2.92)	10.75(273)	9.09 (231)
SR308SI(SE)300□□□①				13.54 (344)	2.95 (75)	11.81(300)	2.24 (57)	2.03 (3.02)	12.76(324)	11.10(282)
SR308SI(SE)322□□□①				14.41 (366)	2.95 (75)	12.68 (322)	2.24 (57)	2.06 (3.07)	13.62(346)	12.68(332)
SR308SI(SE)350□□□①				15.51 (394)	2.95 (75)	13.78 (350)	2.24 (57)	2.10 (3.13)	14.72(374)	13.07(332)

Technical characteristics when self-supported

Speed	26.25 ft/s	(8 m/s)
Acceleration	131.23 ft/s ²	(40 m/s ²)
Pitch	3.15 in.	(80 mm)

Separator

Unassembled p/n	S308C
Assembled p/n	S308CMC

Fastener Separator

Unassembled p/n	S308SH
Assembled p/n	S308SHMC

Pin

Part no.	PG308
----------	-------

End Brackets

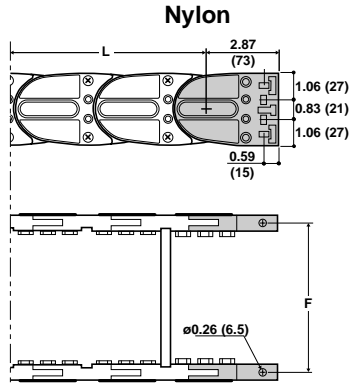
Complete set, assembled	Nylon p/n AN308SKM	Zinc Plated Steel® p/n A308SKM□⑤
Complete set, unassembled	Nylon p/n AN308SK	Zinc Plated Steel® p/n A308SK□⑤

Pin Removal Tool
p/n PZ038

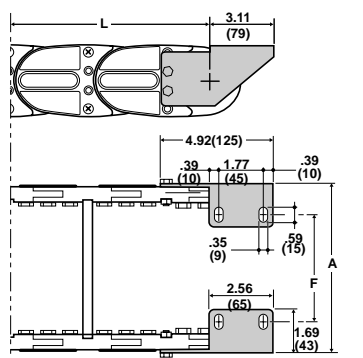
Mounting Bracket details.

Sold in sets of two.

Dimensions in inches (mm).



Zinc Plated Steel®

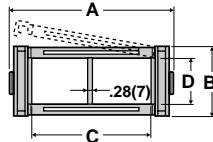


SR309SI/SR309SE

SR309SI: Nylon snap fit bars removable from inner radius.

SR309SE: Nylon snap fit bars removable from outer radius.

Standard carriers equipped with bars mounted on every second link. Also available on every link.③



Carrier② part number	Radius R④ in (mm)	Curve Length M④ in (mm)	O.A. Height H④ in (mm)	Outside Width A in (mm)	Outside Height B in (mm)	Inside Width C in (mm)	Inside Height D in (mm)	Weight lb/ft (kg/m)	Nylon Bracket F in (mm)	Steel Bracket F in (mm)
SR309SI(SE)064□□□①				4.72 (120)	3.94 (100)	2.52 (64)	2.99 (76)	2.71 (4.03)	3.62 (92)	1.97 (50)
SR309SI(SE)084□□□①	7.87 (200)	32.68 (830)	19.69 (500)	5.51 (140)	3.94 (100)	3.31 (84)	2.99 (76)	2.75 (4.09)	4.41 (112)	2.76 (70)
SR309SI(SE)109□□□①				6.50 (165)	3.94 (100)	4.29 (109)	2.99 (76)	2.80 (4.17)	5.39 (137)	3.74 (95)
SR309SI(SE)116□□□①	9.84 (250)	38.78 (985)	23.62 (600)	6.77 (172)	3.94 (100)	4.57 (116)	2.99 (76)	2.82 (4.20)	6.57 (167)	4.92 (125)
SR309SI(SE)139□□□①	11.81 (300)	45.08(1145)	27.56 (700)	7.68 (195)	3.94 (100)	5.47 (139)	2.99 (76)	2.87 (4.27)	8.15 (207)	6.50 (165)
SR309SI(SE)179□□□①	13.78 (350)	51.18(1300)	31.50 (800)	9.25 (235)	3.94 (100)	7.05 (179)	2.99 (76)	2.96 (4.40)	8.98 (228)	7.32 (186)
SR309SI(SE)214□□□①	15.75 (400)	57.48(1460)	35.43 (900)	10.63(270)	3.94 (100)	8.43 (214)	2.99 (76)	3.03 (4.51)	9.53 (242)	7.87 (200)
SR309SI(SE)264□□□①				12.60(320)	3.94 (100)	10.39(264)	2.99 (76)	3.14 (4.67)	11.50 (292)	9.84 (250)
SR309SI(SE)314□□□①	19.69 (500)	69.69(1770)	43.31(1100)	14.57(370)	3.94 (100)	12.36(314)	2.99 (76)	3.25 (4.83)	13.46 (342)	11.81(300)
SR309SI(SE)364□□□①				16.54(420)	3.94 (100)	14.33(364)	2.99 (76)	3.35 (4.99)	15.43 (392)	13.78(350)

Technical characteristics when self-supported

Speed	26.25 ft/s	(8 m/s)
Acceleration	131.23 ft/s ²	(40 m/s ²)
Pitch	3.94 in.	(100 mm)

Separator

Unassembled p/n	S309S
Assembled p/n	S309SMC

Pin

Part no.	PG309
----------	-------

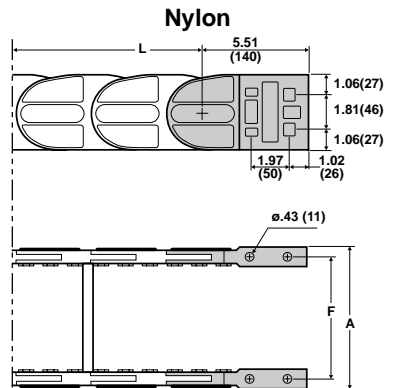
End Brackets

Complete set, assembled	Nylon p/n AN309KM	Zinc Plated Steel® p/n A309SKM□⑤
Complete set, unassembled	Nylon p/n AN309K	Zinc Plated Steel® p/n A309SK□⑤

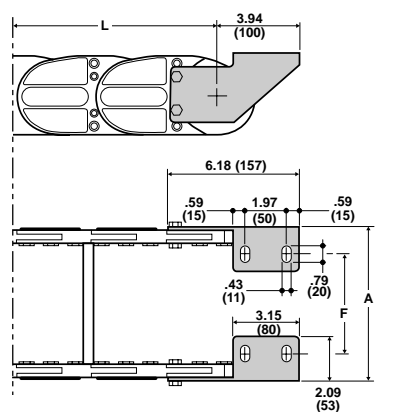
Mounting Bracket details.

Sold in sets of two.

Dimensions in inches (mm).



Zinc Plated Steel®



① Complete model number by inserting value of radius (R) in mm: Example—SR308SI213 **2** **3** **0**

② Model number for carrier with snap fit bars opening from inner radius. To order with opening to outer radius, replace I in model number with E: Example—SR307SE092140.

③ Standard carrier equipped with nylon bar every second link. To order nylon bar at every link, add letter D at end of number: Example—SR308SE213230D.

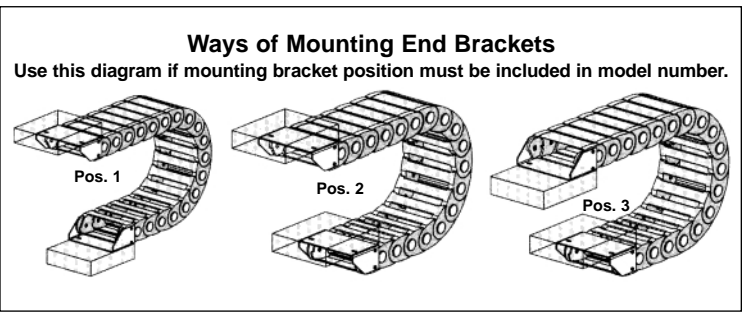
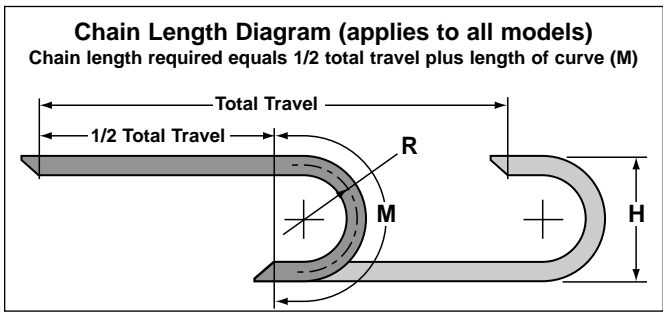
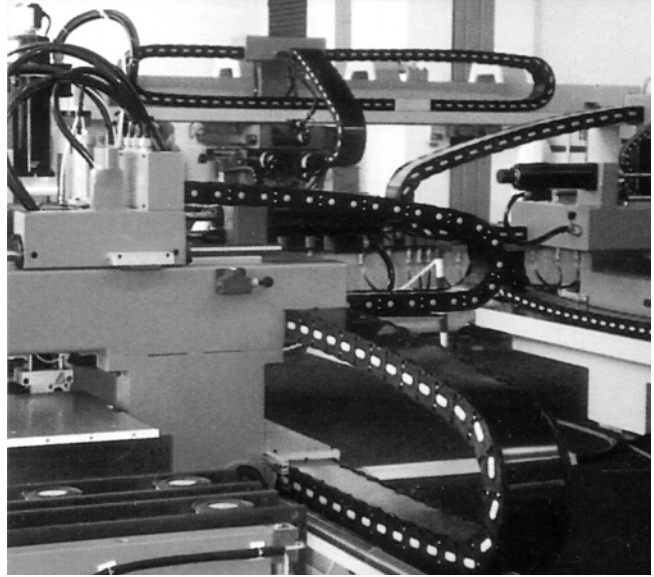
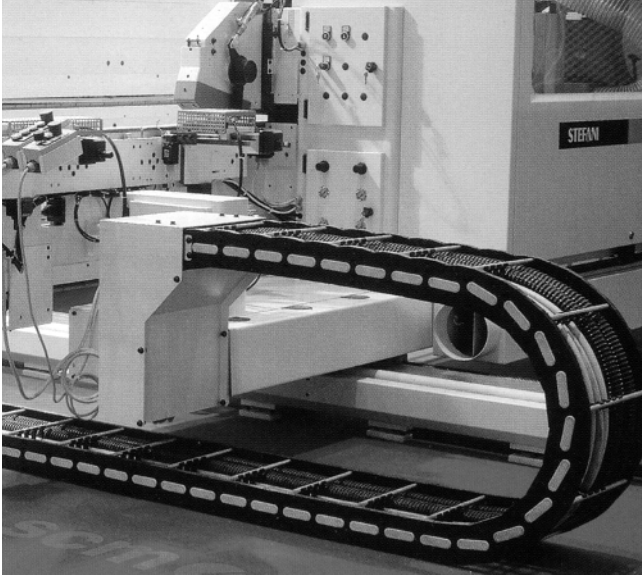
④ Refer to diagram on back page.

⑤ Also available in stainless steel.

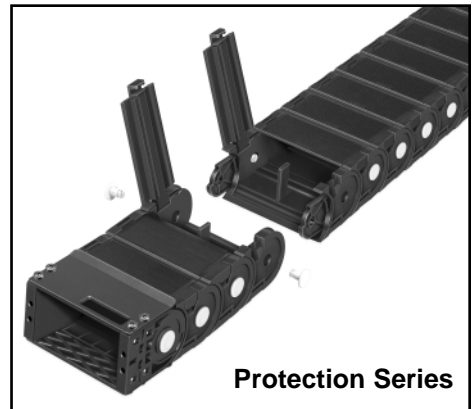
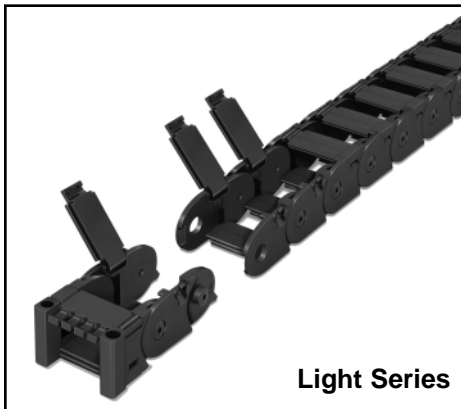
⑥ Indicate mounting position variation. See drawings on back page.

Typical Applications

Heavy Series



Ask your Gleason Representative about the full cable carrier line.



Gleason Reel Corp.

600 South Clark Street
P.O. Box 26
Mayville, WI 53050
Phone: 920-387-4120 Fax: 920-387-4189
www.hubbell-gleason.com