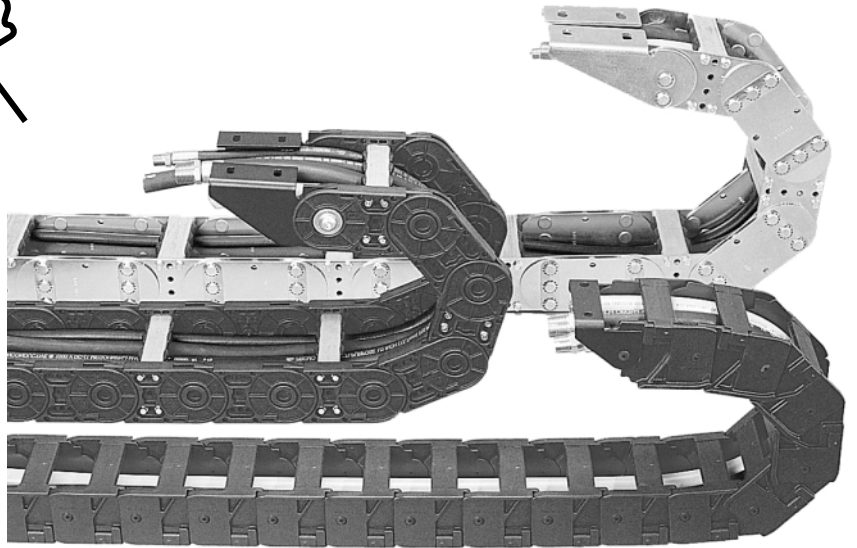
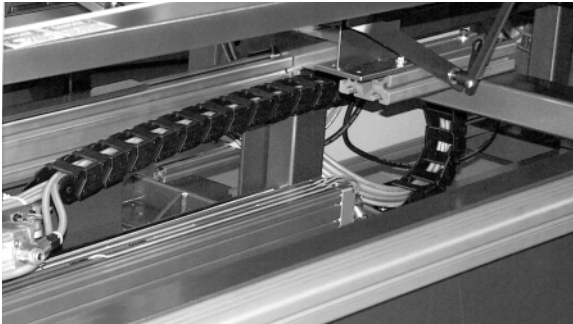




Protect & Control Cables or Hoses that power Moving Equipment

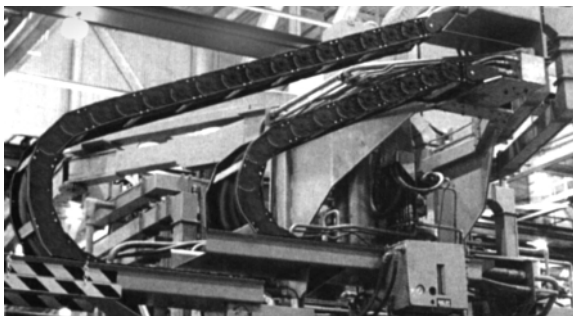


GLEASON PowerTrak®



Non-metallic Type "GRP".

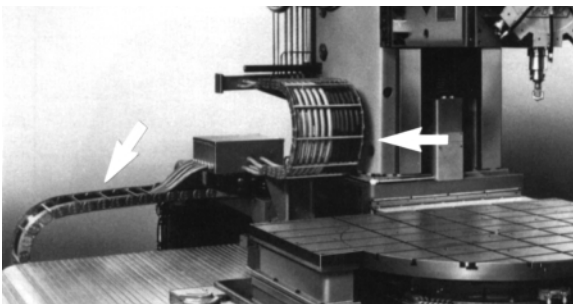
- **Choose from three types:
Steel, Molded Nylon or Combination**
- **Many carrier styles**
- **Hundreds of sizes**
- **Custom lengths to suit application**



**Combination Type "G",
marries best features of
Types "GRP & "E"**

Protect cables and hoses on reciprocating machinery. Increase safety by keeping cables and hoses together, away from moving components and operations.

PowerTrak is available in a variety of styles and materials, including flip-open for easy access to cables and hoses. Metallic or non-metallic, Gleason offers a carrier trak to fit every application.

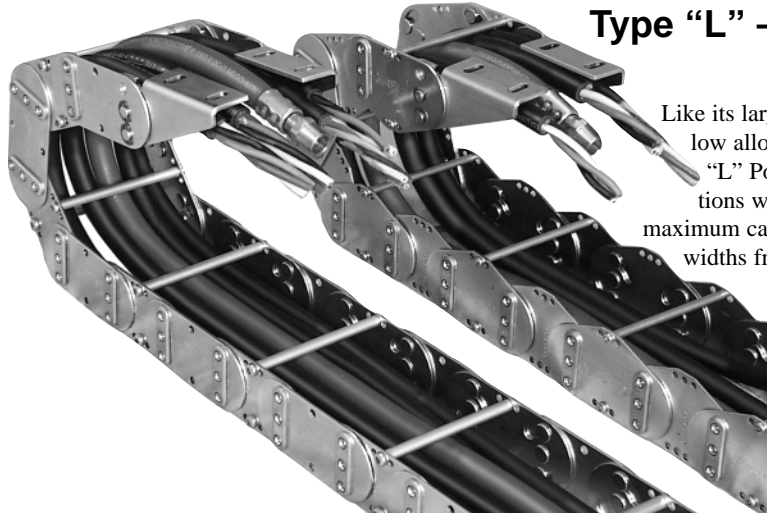


**Steel Link Type "E".
Also available; light duty Type "L" &
Mill Duty or Super Duty Type "EF".**

Although PowerTrak can provide motion in two axes, the most common application provides horizontal motion as shown in the photos at left. Horizontal support, a platform or tray, is required beneath the lower portion of the trak. With a few limitations, cables and hoses of various sizes can be installed within the same trak. Capacity can be increased by nesting two traks (center photo at left) or by installing two traks opposing each other. Applications requiring extra long travel or high speeds may be equipped with guide trays or wheeled carriages (guide trays and carriages not available for all PowerTrak models).

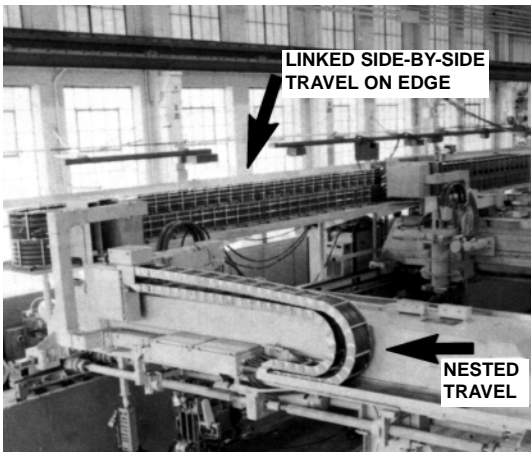
GLEASON PowerTrak®

Type "L" – Steel Link General Duty PowerTrak Models PT16L & PT26L

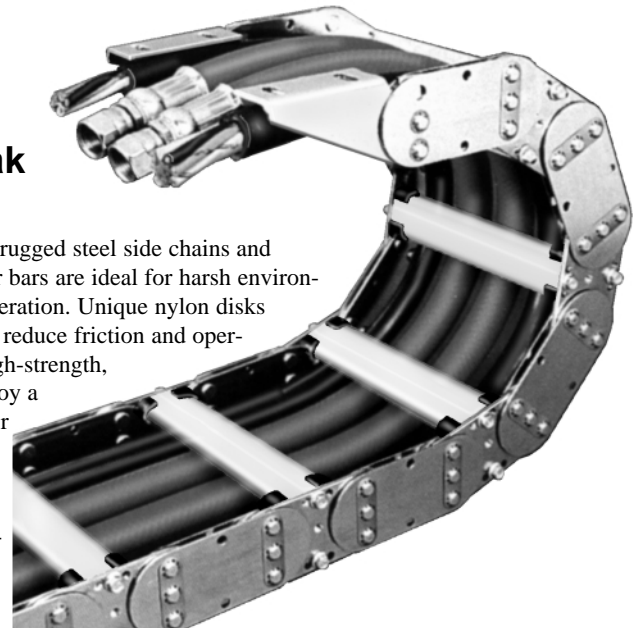


Like its larger Type "E" cousins, Type "L" is constructed from high strength, low alloy steel. However, a 1:1 single plate link design is utilized. Type "L" PowerTrak is the economical solution for small, light duty applications with maximum travel of 20 feet, maximum speeds of 200 fpm, and maximum cable/hose outside diameter no larger than 1.12". It is available in widths from 2" to 12".

Type "E" – Steel Link Heavy Duty PowerTrak Models PT25E - PT100E



Cable/hose carriers with rugged steel side chains and steel or aluminum carrier bars are ideal for harsh environments and high speed operation. Unique nylon disks placed between the links reduce friction and operating noise. Links are high-strength, low-alloy steel and employ a 2:2 double link design for maximum strength. Two inner links are sandwiched between two outer links with anti-friction discs as bearing material.

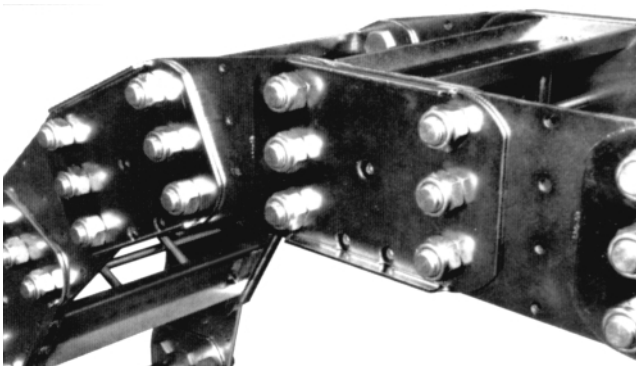


Type "E" PowerTrak is available with inside openings from 0.75" x 3.75" to 8.00" x 23.28" with a maximum cable/hose size of 7.73" o.d. Total travel of 146 feet is possible when optional roller supports are used. Speeds to 500 fpm are possible. A wide choice of cable/hose carrier designs are available, as are custom sizes and carriages.

Typical Type "E" PowerTrak installation on large milling machine.

Type "EF" – Steel Link Cable & Hose Carriers

MILL DUTY Models PT55EF - PT100EF SUPER DUTY Models PT120EF - PT240EF



Mill Duty PowerTrak is designed with the most demanding industrial applications and harsh environments in mind. Standard features include high strength, low alloy, heavy gauge steel links with reinforcing flanges, PowerTrak's self-lubricating system and bolted construction for maximum strength and serviceability. There are sizes to handle cables as large as 7.73" in diameter.

Super Duty PowerTrak is available for Off-Shore Rigs and other applications where "oversized" cables and hoses are used. Construction is much the same as Mill Duty but models are much larger, capable of handling cables or hoses to 20" o.d.

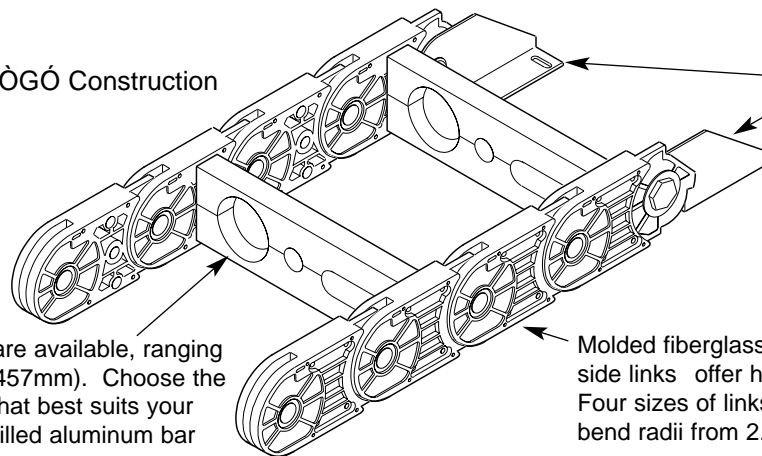
GLEASON PowerTrak

Type 060 Nylon & Aluminum Cable & Hose Carriers Models 25G & 45G

Heavy duty molded nylon side chains on these versatile PowerTraks provide quiet operation and eliminate the need for periodic lubrication. No build-up of dust collecting oil or other lubricants make this carrier ideal for use in dirty environments. The unique links, separated by steel or aluminum cable/hose carriers, do not corrode, are non-conductive, resist abrasion and slide more easily than steel side links. If desired, twist-out aluminum bars allow easy cable/hose installation. A wide variety of cable/hose carrier designs are available.

Type 060 PowerTrak is available with inside opening from 0.75" x 4.00" to 3.09" x 18.00". Maximum cable/hose O.D. 2.81". Superior material strength allows service at greater length and higher speeds than is possible with normal plastic trak. A maximum total travel of 800 feet is possible when optional guide tray and carriage is used. Consult factory for technical data and suitability of optional guide trays and carriage.

Typical Type 060 Construction



Heavy duty steel mounting brackets on each end of PowerTrak adjust to a variety of configurations.

Fourteen styles of carriers are available, ranging in length from 4" to 18" (101 to 457mm). Choose the length and style of carrier that best suits your needs. Type BC custom milled aluminum bar carrier is shown.

Molded fiberglass reinforced black nylon side links offer high strength and low weight. Four sizes of links available, with minimum bend radii from 2.78" to 24.04" (71 to 611mm).

Typical Type 060 PowerTrak installation. Note guide tray supporting trak. Use of optional guide tray or guide tray with carriage dramatically increases travel capabilities. Guide tray and carriage not available with all models. Please consult factory.

GUIDE
TRAY



GLEASON **PowerTrak** *GRP*

Type 0GRP0D Molded Nylon Cable & Hose Carriers Models 101P 0354P

Light weight and corrosion resistant, type 0GRP0 PowerTrak is ideal for carrying control cables, cords, individual wires and tubes. Molded from fiber-reinforced virgin nylon, one piece links easily snap together to customize length. Material is highly wear-resistant, self-lubricating, and is not damaged by salt or hard water, lubricating oils and greases or hydrocarbons such as conventional fuels. It is also unaffected by most paints, lacquers, detergents, aerosol preparations, food products containing animal fats, organic compounds and constant exposure to sunlight.

Type 0GRP0 PowerTrak is available with inside openings from 0.75" x 0.59" to 2.55" x 8.00" for cables or hoses with a maximum outside diameter of 2.12". Maximum total travel is 300 feet when optional guide tray is used. Most sizes have flip open tops for easy access to cables, cords and hoses. Guide tray not suitable for use with all models. Please consult factory.

Flip Open tops, standard on most models,
facilitate cable and hose installation.

PowerTube Models 815, 1020, 1530, 2045

PowerTube has the same non-metallic advantages as PowerTrak GRP BUT IN ADDITION, IT'S TOTALLY ENCLOSED! When protection from hot chips and other debris is needed, PowerTube offers a low cost solution with high aesthetic value.

Seven models to choose from with flange-type (pictured) or scoop-type mounting brackets.

PowerTube is available with inside opening from 0.81" x 1.50" to 2.00" x 4.50" for cables or hoses up to 1.67" O.D. Maximum total travel with guide tray is 200 feet.



Gleason Reel Corp.

P.O. Box 26 #600 South Clark St.

Mayville, WI 53050-0026

Phone 920-387-4120

FAX 262-387-4189

Toll Free: 1-800-571-0166