

INSTALLATION and MAINTENANCE INSTRUCTIONS

HUBBELL SELECT SPRING OPERATED HOSE REELS

This reel is intended for hand pull only and was not designed for continuous duty cycle machine operation.

All units are provided with right hand rotation unless otherwise specified. This means that hose rotates **clockwise** to wind hose when viewing reel from **spring** (inlet) **side**...opposite when viewed from swivel joint (spooled hose connection) side.

Clock-type springs provide power for hose take-up. Reel was pre-tensioned at factory. If installing new hose, pretension following steps under HOSE INSTALLATION on back page.

INSTALLATION

1. Securely mount reel in desired position using 3/8"(M10) bolts. Be sure spool centerline is aligned with hose run.

CAUTION

If mounting overhead provide safety chain between reel base and mounting surface to prevent potential reel drop.

2. Position hose guide. Guide must be oriented so hose pays off reel in a straight line without bends.
3. Pay-out hose to maximum working length. At least one turn of hose should remain on spool. If spool locks up prior to reaching required length, either reel was over-tensioned or reel capacity has been exceeded. Failure to correct this condition will result in shortened spring life and possible damage to other reel components.
4. Attach hose stop and adjust free length of hose. Connect hose to machine or add attachments.
5. If machine pull application or if no-lock operation is desired, disengage ratchet lock. See following section.
6. Connect supply hose to fitting on spring side of reel.
7. Turn on pressure to reel. Test for leaks.

RATCHET LOCK

Reel is shipped with ratchet lock "engaged". If constant spring tension is required, lock may be disengaged by locating and removing the selector plate anchor screw on the frame, rotating the selector plate to disengage position, and replacing and tightening the selector plate screw.

MAINTENANCE

Bearings and springs are prelubricated and require no periodic maintenance.

SPRING REPLACEMENT

The unique SAFETYCHANGE® spring motor consists of a spring sealed within a housing. A replacement spring is supplied sealed in its housing and the old unit should be discarded completely.

1. Turn off supply pressure to reel.
2. Remove hose stop from hose.

3. Wind hose onto reel to relieve **all** spring tension.
4. Using a 3/16" allen wrench, loosen socket head screw in main shaft clamp nut. Support spool and spin nut off shaft.
5. Remove entire spool and spring motor assembly from frame.
6. Remove V-Ring seal from spring assembly.
7. Remove nuts holding spring assembly and slide spring assembly off main shaft.

WARNING

Do not attempt to remove spring from its housing. Clock-type springs can be dangerous to handle. Removal of spring from housing could result in personal injury.

8. Slide new spring assembly onto shaft and reassemble reel by reversing above steps.
9. Adjust spring tension. Refer to SPRING ADJUSTMENT.

HOSE REMOVAL

Use the following procedure to remove worn or damaged hose from reel prior to installation of new hose.

1. Turn off supply pressure to reel.
2. Remove hose stop and allow hose to retract onto spool. Ensure all tension is off spring by manually rotating spool (normally clockwise when viewed from spring side).

CAUTION

Failure to relieve all spring tension prior to removing hose could result in damage to equipment or personal injury. Follow instructions carefully.

3. Remove hose from spool by looping over spool flange.
4. Remove tube clamp from spool.
5. Loosen hose clamp affixing hose to hose barb on swivel joint fitting located on inside of spool.
6. Pull hose out of hole in spool.
7. Slide tube clamp off hose.
8. Install new hose following directions below.

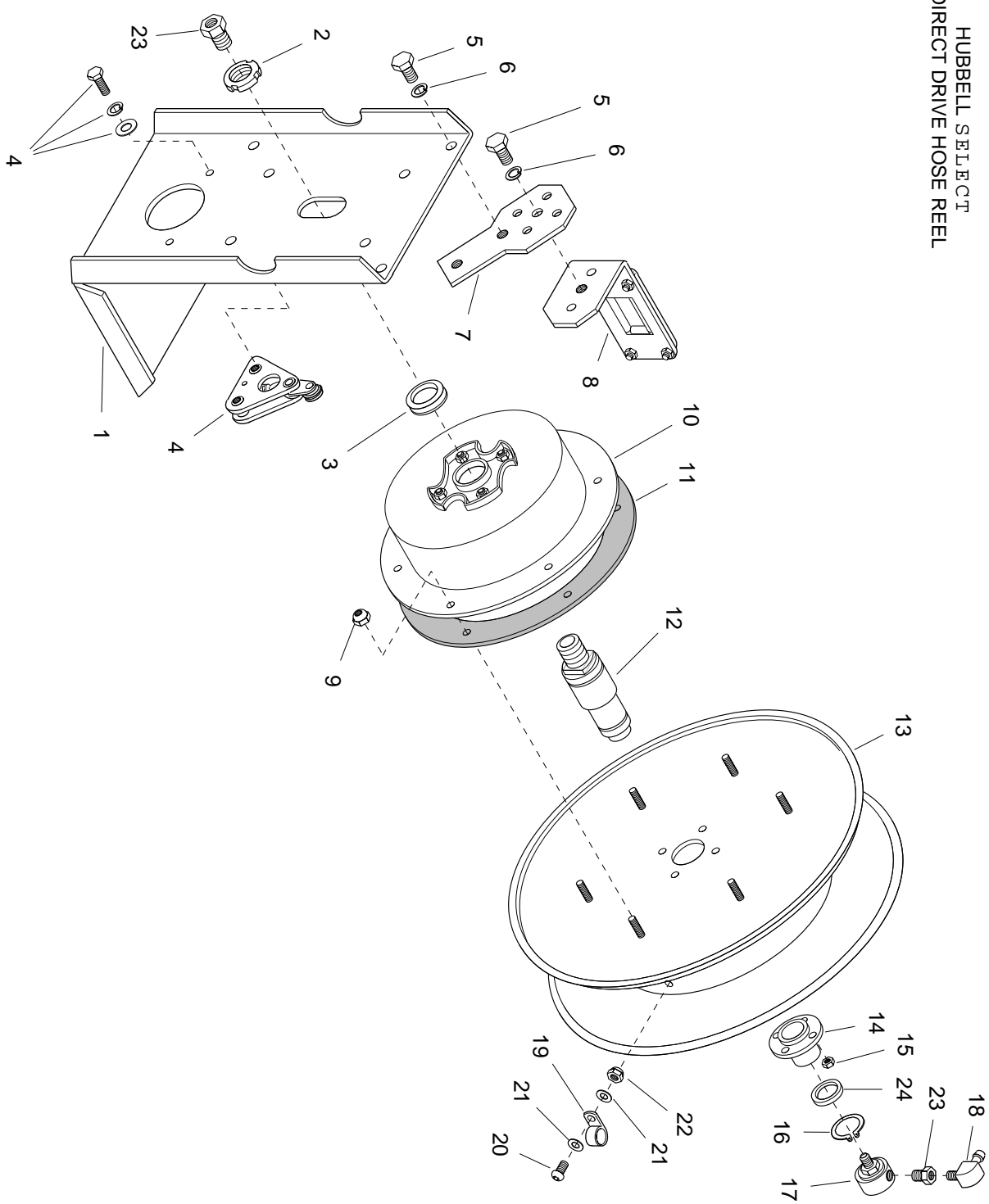
**HUBBELL SELECT
DIRECT DRIVE HOSE REEL
REPLACEMENT PARTS LIST**

ITEM	KIT NO.	DESCRIPTION	QTY.
1	604082BU	Frame Assembly	1
2	021484	Clamp Nut	1
3	025032	“V”-Ring Seal	1
4	604093	Locking Dog Repair Kit (Includes mounting hardware)	1
5	028132	Hex Head Capscrew, M10 x 25L	3
6	028138	Lockwasher, M10	3
7	602502BU	Mount Bracket	1
8	602504BU	Roller Guide Assembly	1
9	028144	Lock Nut, M5 x 0.8, 14" Reel	6
10	05059846	Spring Assembly	1
11	021494	Spring Gasket	1
12	027485	Shaft	1
13	604083GG	Spool Assembly	1

ITEM	KIT NO.	DESCRIPTION	QTY.
14	027444	Flange Bushing	1
15	028144	Lock Nut, M5 x 0.8	4
16	107185	Retaining Ring	1
17	604123	Swivel Joint	1
18	024497	Hose Barb-6, 14" Reel	1
19	604128	Tubing Clamp-3/8" Hose	1
20	103281	5/16 x 3/4 Soc. Hd. Cap Screw	1
21	101206	Flat Washer, 1/4"	2
22	023304	Lock Nut, 5/16	2
23	024516	Bushing	2
24	027456	Thrust Washer	1
OPTIONAL ACCESSORIES			
	602072	Hose Stop	Option
	602540BU	Pivot Base	Option

Always specify **SERIAL NUMBER & MODEL NUMBER**
when ordering parts.

HUBBELL SELECT
DIRECT DRIVE HOSE REEL



HOSE INSTALLATION

Use the following procedure to replace hose. Refer to HOSE INSTALLATION REFERENCE DRAWING, below.

1. Unspool new hose from shipping spool and lay out to eliminate twist.
NOTE: This step is not essential, but will aid in winding operation of the reel and prolong hose life.
2. Remove tube clamp from spool and slide onto hose. Be sure tube clamp is orientated so that loop on clamp will be next to outside spool flange. (See drawing below).
3. Feed bare end of hose through hole in spool hub and connect to hose barb on swivel joint fitting. Secure with hose clamp. (See drawing below).
4. Align tube clamp on hose with hole in spool hub. Fasten with socket head screw, washers and nut.
5. Wind the hose onto the reel spool by hand rotating spool in direction it turns free of spring tension. (Normally clockwise when viewed from spring side) See fig. 1.
8. Pre-tension reel by rotating spool in clockwise direction (when viewed from swivel joint side). Full 360° turns should match last digit in model number on serial plate. See fig. 2.

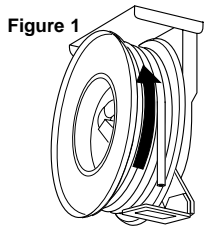


Figure 1
WIND ALL HOSE ONTO SPOOL

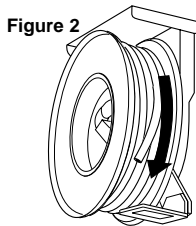


Figure 2
PRE-TENSION-ROTATE SPOOL 360° TURNS IN LAST TWO DIGITS OF MODEL NUMBER ON SERIAL PLATE

9. Engage ratchet lock to prevent spool from unwinding and feed hose end out through hose guide.
10. Attach and adjust hose stop.
11. Turn on pressure to reel. Test for leaks.

SPRING ADJUSTMENT

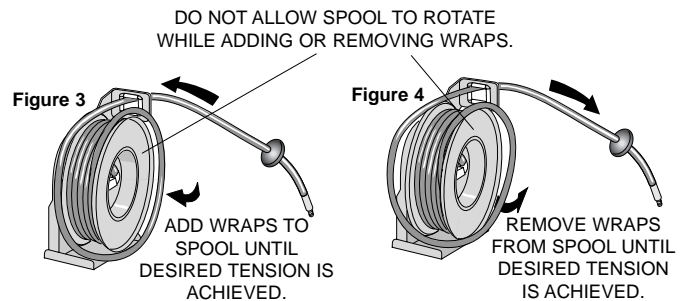
Adjust tension by adding wraps (increasing tension) or removing wraps (decreasing tension) from the spool.

1. Pull about 10' of hose, allowing spool to rotate.

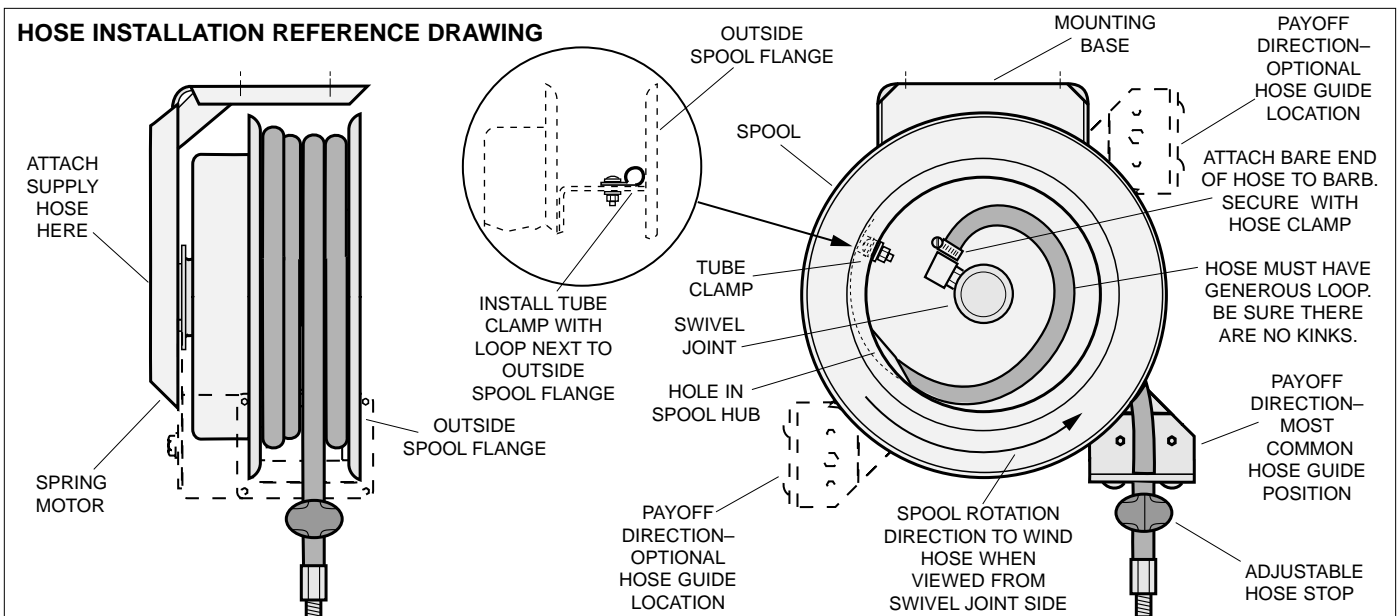
INCREASE TENSION: Without allowing spool to rotate, hand feed hose back through hose guide until loop is large enough to slip onto spool. Add two or three wraps until desired tension is achieved. See Figure 3.

DECREASE TENSION: Without allowing spool to rotate, hand feed hose back through guide to provide slack. Remove one or two wraps from spool. See Figure 4.

2. Test reel operation.



HOSE INSTALLATION REFERENCE DRAWING



Workplace Solutions

P.O. Box 26
600 South Clark St.
Mayville, WI 53050
Phone 920-387-5195