

# INSTALLATION and MAINTENANCE INSTRUCTIONS INDUSTRIAL CORD REELS

**NOTE:** This reel is intended for use primarily in hand-pull applications. If mounted overhead, mounting height should not exceed 16'.

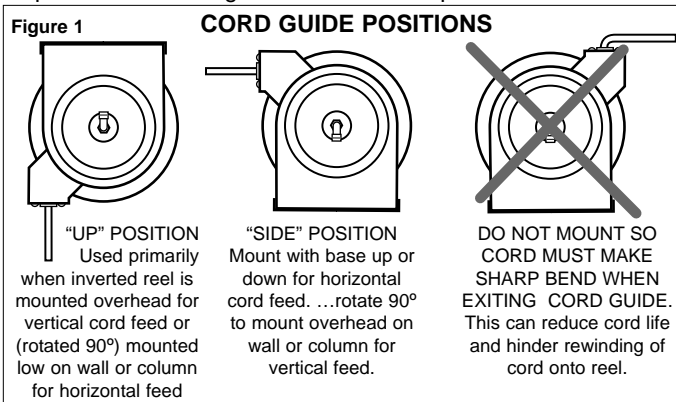
## INSTALLATION

1. Securely mount reel in desired position using properly sized hardware. Be sure spool centerline is aligned with hose run.

### CAUTION

If mounting overhead, provide safety chain between reel base and mounting surface to prevent accidental reel drop.

2. Determine cord guide position. Guide must be oriented so that cord pays off reel in a straight line without bends (Fig. 1). If guide position must be changed, remove bolts securing guide to reel and bolts which will secure guide in desired position. Position guide on reel and replace all bolts.



3. Plug input cord into grounded receptacle or hard-wire input cord to feed line inside approved junction box.
4. Adjust cord stop.

## SPRING ADJUSTMENT

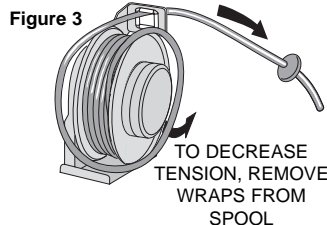
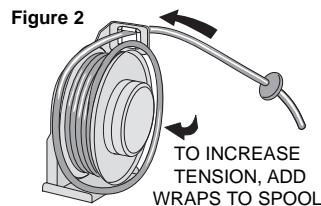
Adjust tension by adding wraps (increasing tension) or removing wraps (decreasing tension) from the spool.

1. Pull about 10' of cord, allowing spool to rotate.

**INCREASE TENSION:** Without allowing spool to rotate, hand feed cord through hose guide until loop is large enough to slip onto spool. **Add** two or three wraps until desired tension is achieved. See Figure 2.

**DECREASE TENSION:** Without allowing spool to rotate, hand feed cord back through guide to provide slack. **Remove** one or two wraps from spool. See Figure 3.

2. Test reel operation.



## MAINTENANCE

Bearings and springs are prelubricated and require no periodic maintenance.

## SPRING REPLACEMENT

If it should be necessary to replace the power spring please contact the factory. You will need to have the model number and serial number from the nameplate on the reel to insure you receive the correct spring. Spring replacement should be performed only by experienced maintenance personnel. Failure to do so could result in personal injury and/or equipment damage.

## OUTPUT CORD REMOVAL

Use the following procedure to remove worn or damaged cord from reel prior to installation of new cord.

### CAUTION

Failure to relieve all spring tension prior to removing cord could result in damage to equipment or personal injury. Follow instructions carefully.

1. Turn off all electrical power.
2. Disconnect cord from end fixture. Remove cord stop and allow cord to retract onto spool. Do not attempt to "backwind" spool by rotating the spool in a counter-clockwise direction, this may cause the power spring to become inoperative.
3. Remove cord from spool by looping over spool flange and slip ring cover.

### WARNING

Do not attempt to remove cord by pulling out through cord guide. Doing so will put excess tension on power spring and could result in personal injury or equipment damage.

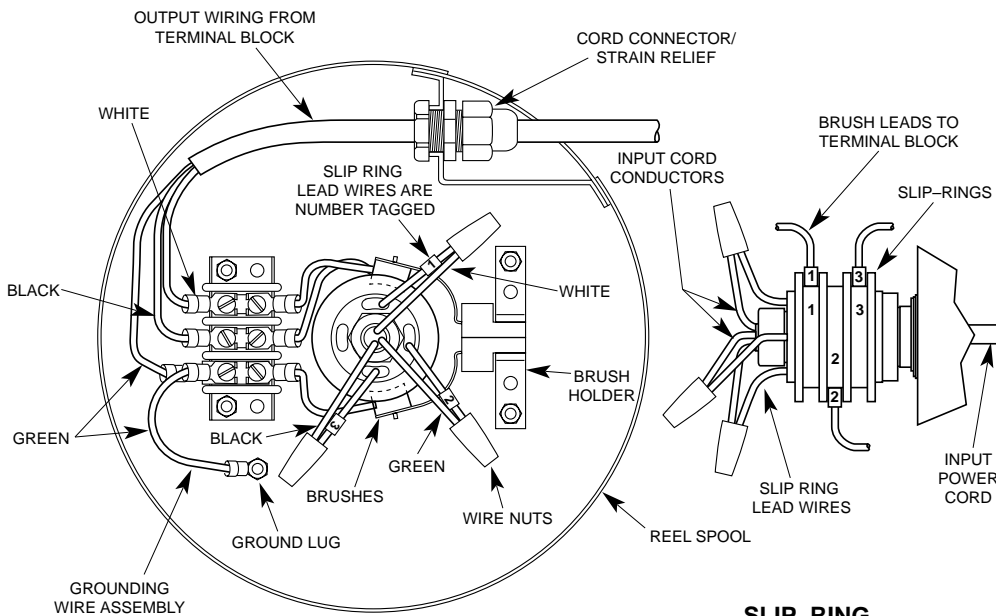
4. Remove slip ring cover.
5. Disconnect conductor leadwires from terminal block inside reel.
6. Remove locking nut from cord connector and pull cord out of spool.
7. Install new cord following directions below.

## OUTPUT CORD INSTALLATION

Use the following procedure to replace cord. Refer to ELECTRICAL CONNECTIONS, over.

1. Turn off all electrical power.
2. Unspool new cord from shipping spool and layout to eliminate twist.  
**NOTE:** This step is not essential, but will aid in winding operation of the reel and prolong cord life.
3. Remove slip ring cover.
4. Slide approx. 10-12 inches of cord thru cord connector.
5. Feed end of cord thru insert in spool and mount cord connector to spool insert using nut provided with cord connector.
6. Strip cord jacket and conductor jackets as required and connect individual conductors to appropriate terminals on terminal block.
7. Without allowing spool to rotate, loop cord over spool flange and wind cord onto spool in a clockwise direction until all cord is wrapped onto spool.
8. Rotate spool clockwise one or two turns to apply tension to power spring.
9. Pass end of cord through cord guide.
10. Install end fixture and then install and adjust cord stop.
11. If necessary adjust spring tension as described in SPRING ADJUSTMENT.

## ELECTRICAL CONNECTIONS



**NOTE:**  
Wire size, wire connectors, connection sequence, and connection methods must comply with National Electrical code and Local Electrical ordinances. If in doubt, contact a local electrical contractor or electrical inspector.

### COLOR SEQUENCE FOR TYPE SO CORD

#### THREE CONDUCTOR CORD

- # 1 – WHITE
- # 2 – GREEN (ground)
- # 3 – BLACK

#### FOUR CONDUCTOR CORD

- # 1 – RED
- # 2 – WHITE
- # 3 – GREEN (ground)
- # 4 – BLACK

### SLIP-RING

- SLIP RING AMPACITY RATED AT 20 AMP MAX PER RING.
- DO NOT EXCEED AMPERAGE RATING OF CORD CONDUCTORS.
- NUMBER OF CIRCUITS MAY BE THREE OR FOUR.  
THREE CIRCUITS SHOWN.



**Workplace Solutions**

**Gleason Reel Corp.**  
P.O. Box 26 • 600 South Clark St.  
Mayville, WI 53050  
Phone 920-387-4120  
www.gleasonreel.com