



Providing you improved solutions through innovation

## Cat6 Data Reels

Hubbell Gleason Reel Category 6 Data Reels maximize efficiency by managing cord in an organized manner, while also meeting the demands of schools, universities, and mobile computer terminals.

Cat6 Data Reels come with a durable, lightweight, low-profile, cast aluminum construction. These Data Reels also feature an improved mounting plate that allows customers to upgrade existing installations or use Hubbell's innovative mounting bracket for a quick, easy installation on any surface.

### FEATURES

#### Category 6 Data Reels

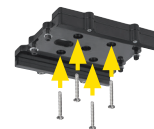
- 50ft (15.24m) cord length, 4ft (1.22m) input pigtail
- Durable, corrosion resistant cast aluminum construction
- Black powder coat finish (primary color) - also available in yellow and white
- Movable guide arm can be mounted in horizontal payout and vertical lift positions
- Positive latch mechanism automatically maintains desired cord length
- Ratchet lock can be disengaged in field for constant tension applications
- Equipped with special gold-on-gold slip ring that maintains Ethernet communications with minimal electrical noise for unparalleled performance
- 1000BASE-T (Gigabyte Ethernet) compatible
- Plug-n-play Ethernet connection
- RJ45 plug on both input and output cords



### MOUNTING BRACKET

**The labor savings are reel!**

The mounting bracket allows you to decrease or eliminate the additional labor associated with installing reels at the end of the job. By starting the installation during the earlier stages of the project when there are fewer time constraints, the inREACH™ mounting bracket reduces trim-out to a fraction of the time.



**Step 1**  
Secure the inREACH™ mounting bracket during the rough-in process.



**Step 2**  
Remove two of the hex bolts from the bracket. Slide the reel into the mounting bracket.



**Step 3**  
Replace two hex bolts and secure screws to complete the job.



# Cat6 Data Reels

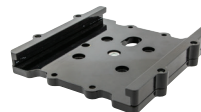
## Category 6 Data Reel

Description	Cable Length ft (m)	Cable Type	Weight lb (kg)	Catalog Number
Black Data Lift Cord Reel with RJ45 Plugs	50 (15.2)	Cat 6	22.9 (10.4)	<b>ACA-CAT6-L-BL</b>
White Data Lift Cord Reel with RJ45 Plugs	50 (15.2)	Cat 6	22.9 (10.4)	<b>ACA-CAT6-L-WH</b>
Yellow Data Lift Cord Reel with RJ45 Plugs	50 (15.2)	Cat 6	22.9 (10.4)	<b>ACA-CAT6-L-L-Y</b>
Black Data Retrieve Cord Reel with RJ45 Plugs	50 (15.2)	Cat 6	22.9 (10.4)	<b>ACA-CAT6-R-BL</b>
White Data Retrieve Cord Reel with RJ45 Plugs	50 (15.2)	Cat 6	22.9 (10.4)	<b>ACA-CAT6-R-WH</b>
Yellow Data Retrieve Cord Reel with RJ45 Plugs	50 (15.2)	Cat 6	22.9 (10.4)	<b>ACA-CAT6-R-Y</b>



## Mounting Accessories

Description	Weight lb (kg)	Catalog Number
<b>Mounting Bracket</b>	2.5 (1.1)	<b>HBLIMB</b>
<b>Pivot Base, 340 Degree</b>	3.5 (1.6)	<b>HBLI340PB</b>



Gleason Reel Corp.  
600 South Clark St.  
Mayville, WI 53050  
920-387-4120  
[www.hubbell.com/gleasonreel/en](http://www.hubbell.com/gleasonreel/en)



GL\_Cat6-DataReels  
03/21